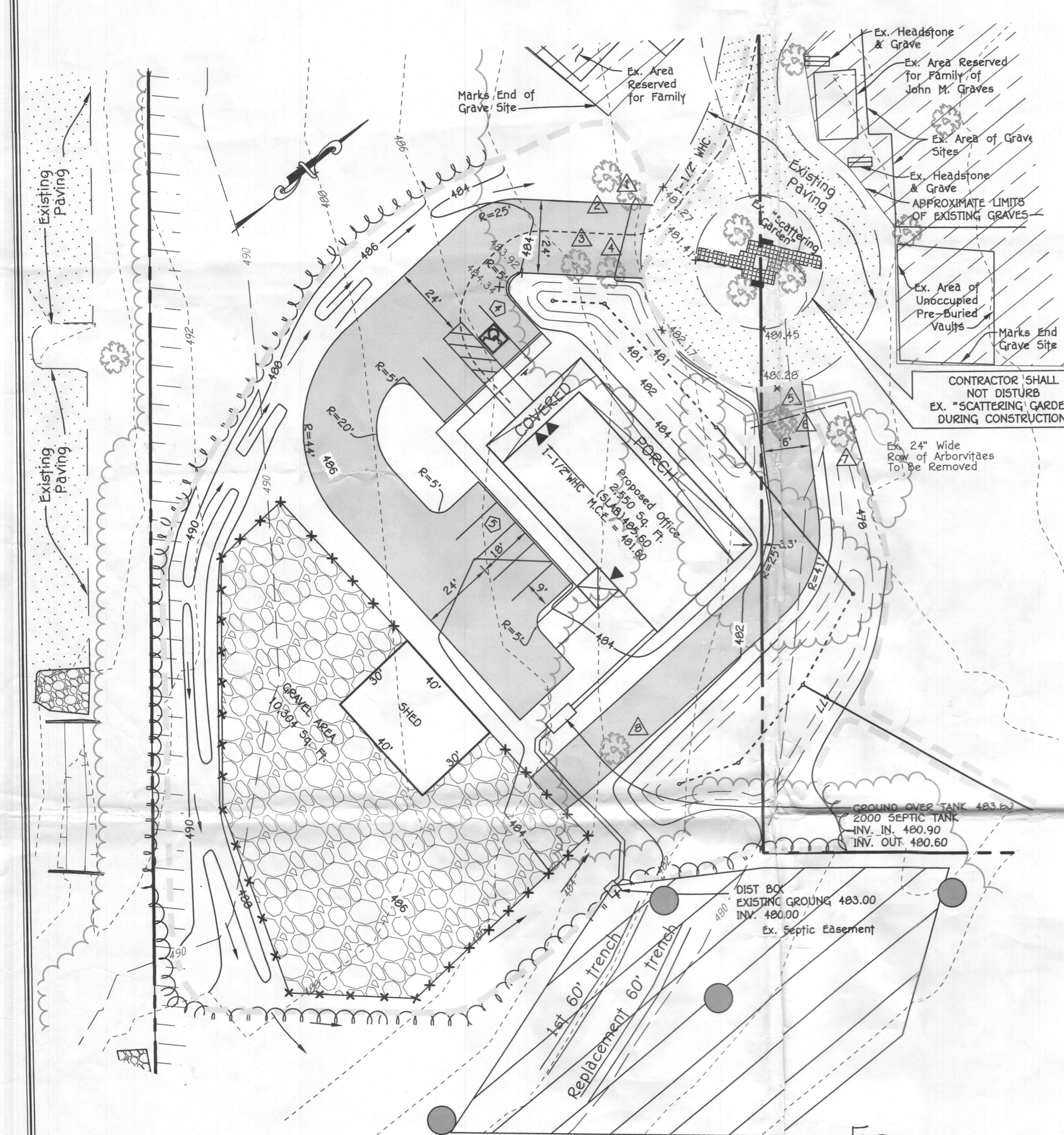


I:\2010\10056\dwg\SDP Office\10056 BAT Office Plan.dwg, 10/20/2014 1:51:55 PM, 1:1

- NOTES
1. Blower piping to FAST may not exceed 100 FT (30.5m) total length and use 4 elbows maximum. For distances greater than 100 FT (30.5m) - consult factory. Blower must be located above flood/standing water levels on a solid surface or concrete base 24" x 18" x 2" (60x45x5cm) minimum.
  2. Vent to be located above finish grade or higher to avoid infiltration. Cap with vent grate w/at least 71 sq in. (458 sq. cm) open surface area. Secure with stainless steel screws.
  3. Run vent to desired location and cover opening with vent grate w/at least 71 sq in. (458 sq. cm) of open surface area. Secure with stainless steel screws. Vent piping must not allow excess moisture build up or back pressure.
  4. All appearances to FAST (e.g. tank, pump outs, etc.) must conform to all country, state, province, and local plumbing and electrical codes. The blower control system is provided by Bio-Microbics, Inc. Optional blower control system by Bio-Microbics, Inc.
  5. FastModule must be secured by bolting through straps, then lid is bolted to the tank.
  6. No more than 4 FT (1.2 m) of fill may be placed over unit lid.
  7. All inspection, viewing and pump out ports must be secured to prevent accidental or unauthorized access.
  8. Tank, anchors, piping, conduit, blower housing pad and vents are provided by others.
  9. Effluent hole will accept a 3" SCH 40 PVC pipe which can be then inserted into the existing 4" discharge pipe in the septic tank. The RetroFAST provides vigorous aeration in a septic tank which reverses the clogging process in a drain field.



- BAT NOTES**
1. ANY CHANGE TO THE LOCATIONS OR DEPTHS TO ANY COMPONENTS MUST BE APPROVED BY THE ENGINEER AND THE HOWARD COUNTY HEALTH DEPARTMENT PRIOR TO INSTALLATION. A REVISED SITE PLAN MAY BE REQUIRED.
  2. THE MAXIMUM COVER OVER THE BAT PER THE MANUFACTURER'S SPECIFICATION IS 3 FEET. IF COVER EXCEEDS 3 FEET, THEN A TRAFFIC BEARING TANK IS REQUIRED.
  3. THE BAT SYSTEM SHALL BE MAINTAINED AND OPERATED FOR THE LIFE OF THE SYSTEM.
  4. THE BAT SHALL BE OPERATED BY AND MAINTAINED BY A CERTIFIED SERVICE PROVIDER.
  5. WITHIN ONE MONTH OF INSTALLATION, A PERSON INSTALLING THE BAT SYSTEM (MDE) IN A MANNER ACCEPTABLE TO MDE, THE ADDRESS AND DATE OF COMPLETION OF THE BAT INSTALLATION AND THE TYPE OF BAT INSTALLATION.
  6. ELECTRICAL WORK FOR THE BAT INSTALLATION MUST BE PERFORMED BY A LICENSED ELECTRICIAN.
  7. AN AGREEMENT AND EASEMENT MUST BE COMPLETED AND SIGNED BY ALL APPLICABLE PARTIES, AND RECORDED IN THE LAND RECORDS OF HOWARD COUNTY.
  8. THE HEALTH DEPARTMENT REQUIRES DOCUMENTATION FOR THE START-UP CERTIFICATION FROM THE MANUFACTURER PRIOR TO FINAL APPROVAL OF THE INSTALLATION.
  9. SURFACE RUNOFF SHALL BE DIRECTED AROUND THE BAT TANK. SEWAGE FLOWS TO THE TANK BY GRAVITY AND WATER EXITING THE TANK TO THE SEPTIC AREA WILL FLOW BY GRAVITY.
  10. IF THERE IS EXCESSIVE RESISTANCE TO THE AGITATOR MOTOR, AN ALARM WILL BE VISIBLE AND AUDIBLE. SEE MANUFACTURER'S SPECS FOR ADDITIONAL INFORMATION.
  11. THE BLOWER MAY NOT BE LOCATED MORE THAN 50' FEET FROM THE TANK BASED ON THE MANUFACTURER'S SPECIFICATIONS.

