



**Howard County  
Health Department**

Maura J. Rossman, M.D., Health Officer

**Bureau of Environmental Health**  
8930 Stanford Boulevard, Columbia, MD 21045  
Main: 410-313-2640 | Fax: 410-313-2648  
TDD 410-313-2323 | Toll Free 1-866-313-6300  
[www.hchealth.org](http://www.hchealth.org)  
Facebook: [www.facebook.com/hocohealth](http://www.facebook.com/hocohealth)

RECEIPT DATE: 5/27/20 **ONSITE SEWAGE DISPOSAL SYSTEM**

APPROVAL DATE: 09/04/2020 **PERMIT: CONSTRUCTION**

P 567852

A

PROPERTY ADDRESS: 1044 STEPPING PLACE, SYKESVILLE, MD 21784

SUBDIVISION: WALKER MEADOWS LOT: 18 TAX ID: 03-601576

CONTRACTOR: SOUTH CARROLL BACKHOE EMAIL: SCBACKHOE@COMCAST.NET

CONTRACTOR ADDRESS: 4410 Salem Bottom Road, Westminster, MD 21157 PHONE: 410-596-3618

CONTRACTOR CERTIFIED FOR BAT INSTALLATION: ☐ MDE ☐ MANUFACTURER:

PROPERTY OWNER: NVR, INC. EMAIL: janastas@nvrinc.com

OWNER ADDRESS: 9720 PATUXENT WOODS DRIVE, COLUMBIA, MD 21046 PHONE: (410)379-5956

BAT UNIT MODEL: HOOT 600 BNR PUMP SIZE: 0.3 Hp PUMP TANK CAPACITY: 1500

OPERATION & MAINTENANCE AGREEMENT DATE SIGNED: DATE RECORDED:

DISTRIBUTION SYSTEM: ☐ GRAVITY ☒ PRESSURE DOSED BEDROOMS: 5 APPLICATION RATE: 1.2

TRENCHES:	LINEAR FEET REQUIRED: <u>104</u>	INLET DEPTH: <u>2.0</u>
	TRENCH WIDTH: <u>3</u>	MAXIMUM BOTTOM DEPTH: <u>5.0</u>
	MINIMUM SPACE BETWEEN TRENCHES: <u>10</u>	EFFECTIVE AREA BEGINNING DEPTH: <u>2.0</u>
LOCATION:	PER APPROVED SITE PLAN. SEWAGE DISPOSAL AREA AND BAT UNIT LOCATION MUST BE STAKED BY LICENSED SURVEYOR PRIOR TO PRE-CONSTRUCTION INSPECTION.	
NOTES:		

ISSUED BY: R BRICKER ISSUE DATE: 6-1-20 EXPIRATION DATE: 5-27-21

NOTE: CONTRACTOR MUST SCHEDULE A PRE-CONSTRUCTION INSPECTION PRIOR TO BEGINNING ANY INSTALLATION

NOTE: CONTRACTOR MUST SCHEDULE AN INSPECTION AND GAIN APPROVAL OF ALL COMPONENTS PRIOR TO COVERING

NOTE: STONE MUST BE APPROVED BY HEALTH DEPARTMENT AND GRAVEL TICKET MUST BE AVAILABLE FOR REVIEW.

NOTE: WATERTIGHT SEPTIC TANKS REQUIRED

NOTE: ALL PARTS OF SEPTIC SYSTEM SHALL BE AT LEAST 100 FEET DOWNGRADIENT FROM ANY WATER WELL

NOTE: MANHOLE RISERS REQUIRED ON ALL SEPTIC TANKS AND PUMP CHAMBERS

NOTE: AN ELECTRICAL PERMIT IS REQUIRED FOR INSTALLATION OF ANY ELECTRICAL COMPONENTS OF THE SYSTEM

☒ ELECTRICAL PERMIT ISSUED E 20002448

NOTE: AN INDIVIDUAL CERTIFIED BY MDE AND THE MANUFACTURER FOR BAT INSTALLATION MUST BE PRESENT AT ALL TIMES DURING BAT INSTALLATION.

NOTE: MDE RECOMMENDS SEPTIC TANKS, BAT, AND OTHER PRETREATMENT UNITS BE PUMPED AT A FREQUENCY ADEQUATE TO ENSURE THAT SOLIDS ARE NOT DISCHARGED TO THE DISPOSAL AREA

**NEITHER THE HOWARD COUNTY COUNCIL NOR THE HEALTH DEPARTMENT IS RESPONSIBLE FOR THE  
SUCCESSFUL OPERATION OF ANY SYSTEM.**

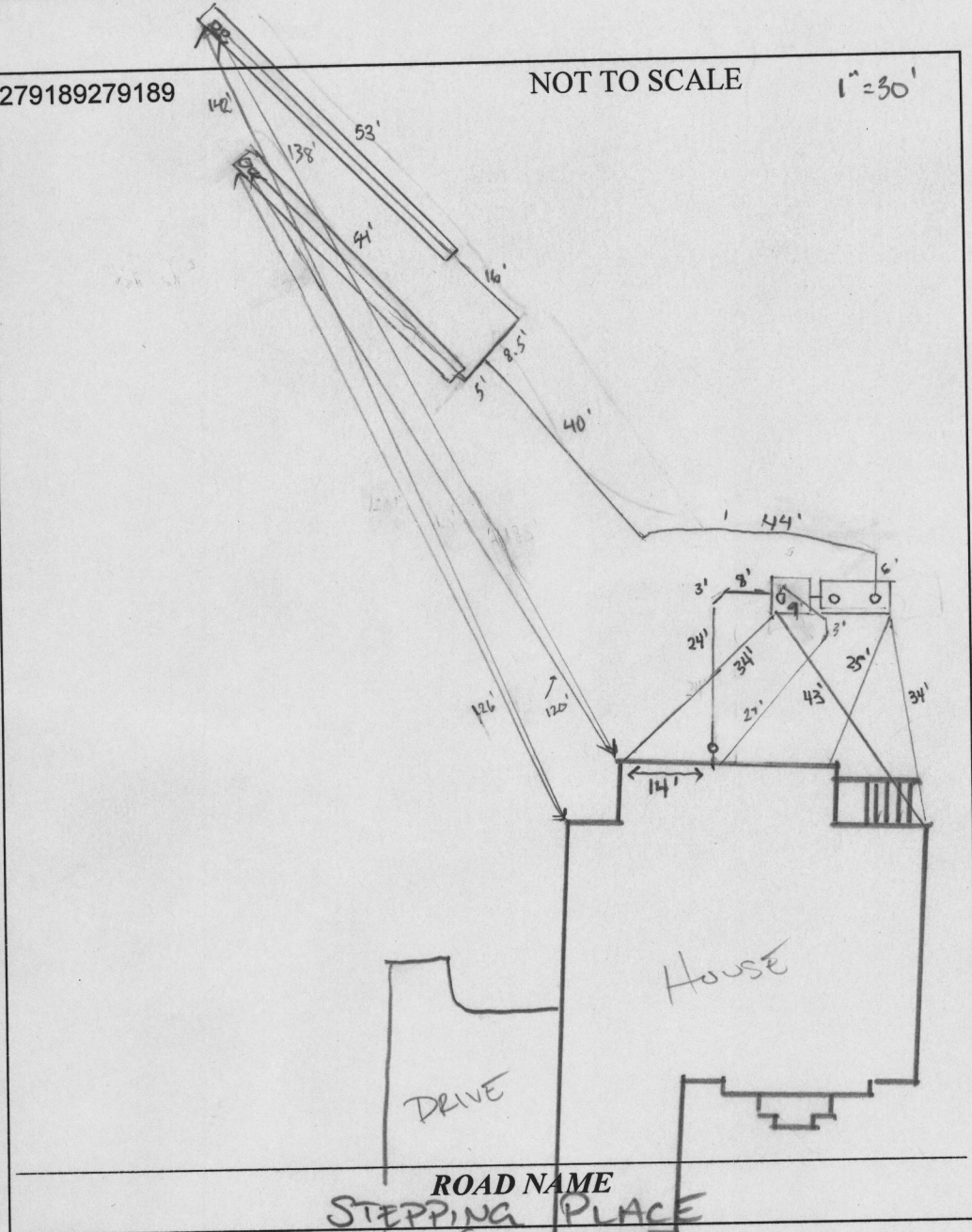
**PERMITTEE RESPONSIBLE FOR OBTAINING FINAL APPROVAL ON THIS PERMIT.**

**CALL 410-313-1771 TO SCHEDULE INSPECTIONS.**

279189279189

NOT TO SCALE

1"=30'

**TRENCH/DRAINFIELD DATA**

WIDTH	INLET	BOTTOM
3'	2'	5'
NUMBER OF TRENCHES		2
TOTAL LENGTH		107'
ABSORPTION AREA		321 sq ft
DISTRIBUTION BOX LEVEL		-
DISTRIBUTION BOX BAFFLE		-
DISTRIBUTION BOX PORT		-

**PRE-CONSTRUCTION:****SEPTIC TANK DATA**

SEPTIC TANK 1 LEVEL	yes
MANUFACTURER	Hoot
CAPACITY	1500 GAL
SEAM LOC	top
TANK LID DEPTH	3'
BAFFLES	front (4")
BAFFLE FILTER	-
MANHOLE LOC	front / back
6" PORT LOC	-
WATERTIGHT TEST	-
SLOTTED	no
DATE ON LID	5/27/20

**PUMP/SEPTIC TANK LEVEL**

SEPTIC TANK 2 LEVEL	yes
MANUFACTURER	Hoot
CAPACITY	600 GAL
SEAM LOC	top
TANK LID DEPTH	3'
BAFFLES	front (6")
BAFFLE FILTER	-
MANHOLE LOC	front
6" PORT LOC	-
WATERTIGHT TEST	-
SLOTTED	-
DATE ON LID	5/11/20

06/15/2020 TANK, SDA, TRENCHES  
STAKED. CONFIRMED CONTOUR.  
OK TO START. (to)

INSTALLATION: 6/25/20 - site inspection contractor on site, No SHC tanks set ~ 3' cover, BAT filter has baffle, inlet baffle from solids line, partial as built complete

7/1/2020 Force main, manifold, laterals and trenches all constructed according to plan. Laterals confirmed to have 17 perforations, 36.7" apart. OK to backfill. Respect for BAT and pump start up. (ST) 7/8/20 SHC installed. Needs BAT and P/A (ST)

08/17/2020 BAT RIGHT PANEL 5, PUMP 15 (RHOMBUS), 19 (ALARM - ~ CONTROLLER). PUMP/ALARM FUNCTION. AWAITING START UP LETTER. (to)

FINAL INSPECTOR

DATE OF APPROVAL 09/04/2020



BERNARD F. & KAREN A. ENGEL  
MAP 9, BLOCK 12, P. 306  
LOT 5-D  
12366 HOWARD LODGE DR.  
SYKESVILLE MD 21784  
L 4224 f. 046  
ZONE: RR-DEO

CHARLES K. & KAREN E. LAPE  
MAP 9, BLOCK 12, P. 306  
LOT 5-C  
12364 HOWARD LODGE DR.  
SYKESVILLE MD 21784  
L 6336 f. 222  
ZONE: RR-DEO

GARY D. & LINDA K. COKER  
MAP 9, BLOCK 12, P. 306  
LOT 5-B  
12362 HOWARD LODGE DR.  
SYKESVILLE MD 21784  
L 1754 f. 266  
ZONE: RR-DEO



Bureau of Environmental Health  
8930 Stanford Blvd | Columbia, MD 21045  
410.313.2640 - Voice/Relay  
410.313.2648 - Fax  
1.866.313.6300 - Toll Free

Maura J. Rossman, M.D., Health Officer

**OPERATION AND MAINTENANCE AGREEMENT  
FOR AN ON-SITE SEWAGE DISPOSAL SYSTEM  
HAVING AN ADVANCED PRE-TREATMENT SYSTEM**

THIS AGREEMENT is made this 10<sup>th</sup> day of August, among NV HOMES  
venkat Nallu & Mridula Karduri, hereinafter collectively referred to as  
"Owner", and the Howard County Health Department hereinafter referred to as the "County".

WHEREAS, Owner is the owner or contract owner of a parcel of land located at  
1044 Stepping Place, Sykesville, MD 21784, in the 3 Election District of Howard  
County, Maryland, and the deed and subdivision plat of the property is recorded among the Land  
Records of Howard County, Maryland, Tax Map # 9, Block # NA, Parcel # 66, Deed  
Reference # 24974-79 and Tax Account # 03-601576 ("the Property").

WHEREAS, The Property is suitable for the installation of a conventional on-site sewage  
disposal system with an advanced pre-treatment system, utilizing best available technology to  
perform nitrogen reduction, in accordance with the Code of Maryland Regulations 26.04.02.07,  
effective November 24, 2016. The pre-treatment device being installed is  
Hoot 600.

NOW, THEREFORE, the parties hereto agree as follows:

A. Owner hereby grants to the County the right to enter upon the Property at any reasonable time  
with prior notice for access to the system to make periodic inspections and the Owner agrees to  
provide any information and data in Owner's possession reasonably requested and needed by the  
County.

B. Owner acknowledges and agrees that neither the County nor any of its agents or employees,  
either officially or individually, underwrites the operation of any system approved by them.

C. The Owner will devote reasonable care and effort to the operation and maintenance of the  
system in perpetuity or until a public sewer connection is made so that a system malfunction is  
not the result of poor maintenance, faulty operation, or neglect.

D. The Owner agrees to enter into a contract reasonably acceptable to the Owner and the County  
with a private entity to operate and maintain on a regularly scheduled basis an approved  
advanced pre-treatment system. The owner shall supply a copy of the contract to the County  
when it is renewed or altered.

E. This agreement shall run with the land and upon Owner's taking title to the Property shall  
bind the Owner, their heirs, successors, and assigns to the provisions of the agreement as long as

the property is in existence and after installation of the system. Owner further agrees that they shall inform in writing any subsequent purchaser or lessee of the Property that the system shall require maintenance or other attention. Upon taking title to the Property, the Owner agrees to cause this agreement to be recorded in the Land Records of Howard County and assure that it becomes part of the Deed for the subject property in order that prospective buyers may be aware of the special conditions affecting this property.

F. This agreement shall not be construed to limit any authority of the County to protect the public health, safety or comfort or to issue any other orders to take any other action which is now or may hereafter be within its authority.

G. This agreement may be voided at any time at the discretion of the County.

H. This agreement contains the entire agreement and understanding between the County and the Owner. There are no additional terms other than as contained in this agreement. This agreement may not be modified, except in writing signed by each of the parties or by their authorized representatives.

I. The laws of the State of Maryland govern the provisions of all transactions pursuant to this agreement.

J. Owner acknowledges and agrees that interior renovations to increase the number of bedrooms or an increase in living space shall not be permitted without approval from the County.

IN WITNESS WHEREOF, the parties have signed this agreement on the date indicated above.

*William Davis* 8/12/20  
Howard County Health Department

DocuSigned by:

*James Anastasia* 8/5/2020  
Owner #1 Signature Date

NVR INC. (NV Homes)  
Owner #1 Print Name

\_\_\_\_\_  
Owner #2 Signature Date

\_\_\_\_\_  
Owner #2 Print Name

DocuSigned by:

*VENKATESWARA Nallu* 8/5/2020  
Buyer #1 Signature Date

Venkat Nallu  
Buyer #1 Print Name

DocuSigned by:

*Mridula Karduri* 8/4/2020  
Buyer #2 Signature Date

Mridula Karduri  
Buyer #2 Print Name



**MAYER BROS., INC.**

*Precast Concrete Products*

6264 Race Rd. Elkridge, MD 21075

## Letter of Satisfaction Hoot System Installation

Address of Property: 1044 Stepping Place  
Sykesville, MD, 21784

Date of Final Inspection: 8/17/20

Installer: South Carroll Backhoe Service

Hoot Technician/Inspector: Mike Sample

I hereby certify that the Hoot system installed at the property listed above has been installed according to proper Hoot installation practices. I have also verified the startup of the system and it is in proper working order.

Sincerely,

N. Michael Sample

Name of Inspector

Mayer Bros., Inc.

PH: 410-796-1434

FX: 410-796-1438

**WBE**

**NPCA Certified Plant**

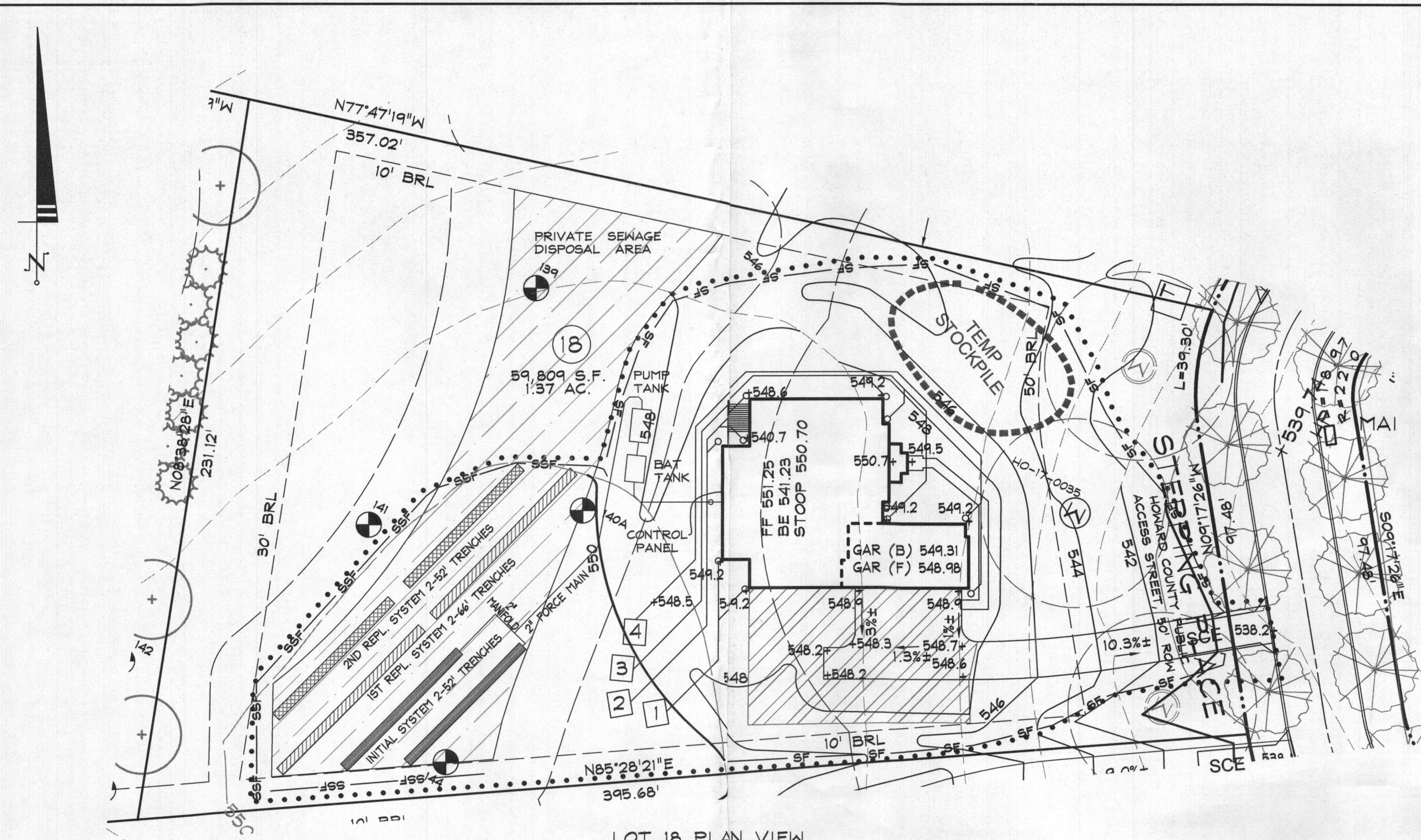
[mayerbro@connext.net](mailto:mayerbro@connext.net)

[www.mayerbrosprecast.com](http://www.mayerbrosprecast.com)

Grease Interceptors, Grease Solutions, Aerobic Treatment Units, Septic Tanks, Holding Tanks, Storm Water Structures, Hydroceptors,  
Bench Barrier, Water Meter Vaults, Sectional Valve Vaults, Top Slabs, Curb Heads, Curb Bumpers, PermEntry Basement Entries,  
Scapewel Window Wells, Custom Precast Products

## FILE INQUIRY NOTES

DATE	RESULTS OF REVIEW FOR FILE
	Diehl Property, Lot 2 Proposed Lot #18
	* Any septic system drain field installed in the area of this lot must have low-pressure distribution (LPD) design or an approved alternative design.
	R. Bruckey 6/5/2014
9/20/15	Septic system must include a BAT unit. Trench bottoms are limited to 5-ft. depth.
	R. Bruckey



LOT 18 PLAN VIEW  
SCALE: 1" = 30'

DRYWELL #	L X W	STONE DEPTH
1	7'x6'	5'
2	7'x6'	5'
3	7'x6'	5'
4	7'x6'	5'

REFER TO SHERT 25 (F-17-045)  
FOR DRYWELL DETAIL D-9.01.

IF THE LOCATION OF THE OF THE STANDARD PROBE STAFF IN THE PUMP TANK IS MORE THAN 50' FROM THE CONTROL PANEL, A FLOAT TREE MUST BE INSTALLED TO CONTROL THE RECIRCULATION PUMP INSTEAD OF THE STANDARD PROBE STAFF. CALL MAYER BROS. IN ADVANCE TO ORDER PARTS AND DISCUSS.

PUMP CHAMBER SPECIFICATIONS	
Pump chamber volume (available for storage) =	1500 gallons
Pump chamber type (Enter "R" for rectangular or "C" for circular):	R
L - Interior tank length/diameter =	153 inches
W - Interior tank width/diameter =	83 inches
A - Cross-sectional area: For "C", 3.142 X (1/2)L <sup>2</sup> For "R", L X W =	9639 sq. inches
H - Interior tank height (height to inlet unless otherwise approved) =	48 inches
Vt - Actual (usable) tank volume = A X H / 231 cubic inches per gallon =	2002.9 gallons
pH - Pump riser height =	6 inches

DOSE INFORMATION/VOLUME CALCULATIONS	
Vt - Volume in laterals X 5 =	53.5 gallons
Vt - Force main and manifold flow back volume =	21.62 gallons
Vc - Volume of Force Main+ Manifold + 6x laterals =	75.12 gallons
Elevation of inside bottom (floor) of pump chamber =	541.9 feet
Pump height =	6 inches

FLOAT SETTINGS	
Pump off float setting (set so that pump remains submerged) =	22 inches
Distance req'd b/n on and off floats = (Vc X 231 cubic inches per gallon) / A =	543.73 feet
Pump on float setting - off float setting - distance b/n on and off floats =	3 inches
High water alarm setting - pump on float setting = 6 inches	25 inches

STORAGE/PUMP REQUIREMENTS	
Height of storage remaining above high water alarm = H - Ha =	17 inches
which equates to	709.4 gallons
Height of storage above high water alarm required for ONE DAY'S storage =	18 inches
Height of storage above high water alarm required for a HALF DAY'S storage =	9 inches

[ ] Configuration is acceptable with a single pump	SUMMARY
[ X ] Configuration is acceptable with duplex pumps	Pump riser height = 6 inches
[ ] Pump chamber does not provide adequate storage	Pump off float setting = 22 inches
	Pump on float setting = 25 inches
	High water alarm setting = 31 inches

END MANIFOLD SPECIFICATIONS	
Pipe Diameter =	2 inches
Distance between manifold and end of bed (10 inches suggested) =	12 inches
Number of laterals (allowing for 2' to 4' foot spacing) =	2 laterals
Distance between laterals =	13 feet

Pipe sizes and diameters	
Laterals (select diameters from chart)	
Pipe number (see chart below)	Type of pipe
1	Sch 40
2	Sch 40
3	Sch 40
4	Sch 40
5	Sch 40
6	Sch 40
7	Sch 40
8	Sch 40
9	Sch 40
10	Sch 40
11	Sch 40
12	Sch 40
13	Sch 40
14	Sch 40
15	Sch 40
16	Sch 40
17	Sch 40
18	Sch 40
19	Sch 40
20	Sch 40
21	Sch 40
22	Sch 40
23	Sch 40
24	Sch 40
25	Sch 40
26	Sch 40
27	Sch 40
28	Sch 40
29	Sch 40
30	Sch 40
31	Sch 40
32	Sch 40
33	Sch 40
34	Sch 40
35	Sch 40
36	Sch 40
37	Sch 40
38	Sch 40
39	Sch 40
40	Sch 40
41	Sch 40
42	Sch 40
43	Sch 40
44	Sch 40
45	Sch 40
46	Sch 40
47	Sch 40
48	Sch 40
49	Sch 40
50	Sch 40
51	Sch 40
52	Sch 40
53	Sch 40
54	Sch 40
55	Sch 40
56	Sch 40
57	Sch 40
58	Sch 40
59	Sch 40
60	Sch 40
61	Sch 40
62	Sch 40
63	Sch 40
64	Sch 40
65	Sch 40
66	Sch 40
67	Sch 40
68	Sch 40
69	Sch 40
70	Sch 40
71	Sch 40
72	Sch 40
73	Sch 40
74	Sch 40
75	Sch 40
76	Sch 40
77	Sch 40
78	Sch 40
79	Sch 40
80	Sch 40
81	Sch 40
82	Sch 40
83	Sch 40
84	Sch 40
85	Sch 40
86	Sch 40
87	Sch 40
88	Sch 40
89	Sch 40
90	Sch 40
91	Sch 40
92	Sch 40
93	Sch 40
94	Sch 40
95	Sch 40
96	Sch 40
97	Sch 40
98	Sch 40
99	Sch 40
100	Sch 40
101	Sch 40
102	Sch 40
103	Sch 40
104	Sch 40
105	Sch 40
106	Sch 40
107	Sch 40
108	Sch 40
109	Sch 40
110	Sch 40
111	Sch 40
112	Sch 40
113	Sch 40
114	Sch 40
115	Sch 40
116	Sch 40
117	Sch 40
118	Sch 40
119	Sch 40
120	Sch 40
121	Sch 40
122	Sch 40
123	Sch 40
124	Sch 40
125	Sch 40
126	Sch 40
127	Sch 40
128	Sch 40
129	Sch 40
130	Sch 40
131	Sch 40
132	Sch 40
133	Sch 40
134	Sch 40
135	Sch 40
136	Sch 40
137	Sch 40
138	Sch 40
139	Sch 40
140	Sch 40
141	Sch 40
142	Sch 40
143	Sch 40
144	Sch 40
145	Sch 40
146	Sch 40
147	Sch 40
148	Sch 40
149	Sch 40
150	Sch 40
151	Sch 40
152	Sch 40
153	Sch 40
154	Sch 40
155	Sch 40
156	Sch 40
157	Sch 40
158	Sch 40
159	Sch 40
160	Sch 40
161	Sch 40
162	Sch 40
163	Sch 40
164	Sch 40
165	Sch 40
166	Sch 40
167	Sch 40
168	Sch 40
169	Sch 40
170	Sch 40
171	Sch 40
172	Sch 40
173	Sch 40
174	Sch 40
175	Sch 40
176	Sch 40
177	Sch 40
178	Sch 40
179	Sch 40
180	Sch 40
181	Sch 40
182	Sch 40
183	Sch 40
184	Sch 40
185	Sch 40
186	Sch 40
187	Sch 40
188	Sch 40
189	Sch 40
190	Sch 40
191	Sch 40
192	Sch 40
193	Sch 40
194	Sch 40
195	Sch 40
196	Sch 40
197	Sch 40
198	Sch 40
199	Sch 40
200	Sch 40
201	Sch 40
202	Sch 40
203	Sch 40
204	Sch 40
205	Sch 40
206	Sch 40
207	Sch 40
208	Sch 40
209	Sch 40
210	Sch 40
211	Sch 40
212	Sch 40
213	Sch 40
214	Sch 40
215	Sch 40
216	Sch 40
217	Sch 40
218	Sch 40
219	Sch 40
220	Sch 40
221	Sch 40
222	Sch 40
223	Sch 40
224	Sch 40
225	Sch 40
226	Sch 40
227	Sch 40
228	Sch 40
229	Sch 40
230	Sch 40
231	Sch 40
232	Sch 40
233	Sch 40
234	Sch 40
235	Sch 40
236	Sch 40
237	Sch 40
238	Sch 40
239	Sch 40
240	Sch 40
241	Sch 40
242	Sch 40
243	Sch 40
244	Sch 40
245	Sch 40
246	Sch 40
247	Sch 40
248	Sch 40
249	Sch 40
250	Sch 40
251	Sch 40
252	Sch 40
253	Sch 40
254	Sch 40
255	Sch 40
256	Sch 40
257	Sch 40
258	Sch 40
259	Sch 40
260	Sch 40
261	Sch 40
262	Sch 40
263	Sch 40
264	Sch 40
265	Sch 40
266	Sch 40
267	Sch 40
268	Sch 40
269	Sch 40
270	Sch 40
271	Sch 40
272	Sch 40
273	Sch 40
274	Sch 40
275	Sch 40
276	Sch 40
277	Sch 40
278	Sch 40
279	Sch 40
280	Sch 40
281	Sch 40
282	Sch 40
283	Sch 40
284	Sch 40
285	Sch 40
286	Sch 40
287	Sch 40
288	Sch 40
289	Sch 40
290	Sch 40
291	Sch 40
292	Sch 40
293	Sch 40
294	Sch 40
295	Sch 40
296	Sch 40
297	Sch 40
298	Sch 40
299	Sch 40
300	Sch 40
301	Sch 40
302	Sch 40
303	Sch 40
304	Sch 40
305	Sch 40
306	Sch 40
307	Sch 40
308	Sch 40
309	Sch 40
310	Sch 40
311	Sch 40
312	Sch 40
313	Sch 40
314	Sch 40
315	Sch 40
316	Sch 40
317	Sch 40
318	Sch 40
319	Sch 40
320	Sch 40
321	Sch 40
322	Sch 40
323	Sch 40
324	Sch 40
325	Sch 40
326	Sch 40
327	Sch 40
328	Sch 40
329	Sch 40
330	Sch 40
331	Sch 40
332	Sch 40
333	Sch 40
334	Sch 40
335	Sch 40
336	Sch 40
337	Sch 40
338	Sch 40
339	Sch 40
340	Sch 40
341	Sch 40
342	Sch 40
343	Sch 40
344	Sch 40
345	Sch 40
346	Sch 40
347	Sch 40
348	Sch 40
349	Sch 40
350	Sch 40
351	Sch 40
352	Sch 40
353	Sch 40
354	Sch 40
355	Sch 40
356	Sch 40
357	Sch 40
358	Sch 40
359	Sch 40
360	Sch 40
361	Sch 40
362	Sch 40
363	Sch 40
364	Sch 40
365	Sch 40
366	Sch 40
367	Sch 40
368	Sch 40
369	Sch 40
370	Sch 40
371	Sch 40
372	Sch 40
373	Sch 40
374	Sch 40
375	Sch 40
376	Sch 40
377	Sch 40
378	Sch 40
379	Sch 40
380	Sch 40
381	Sch 40
382	Sch 40
383	Sch 40
384	Sch 40
385	Sch 40
386	Sch 40
387	Sch 40
388	Sch 40
389	Sch 40
390	Sch 40
391	Sch 40
392	Sch 40
393	Sch 40
394	Sch 40
395	Sch 40
396	Sch 40
397	Sch 40
398	Sch 40
399	Sch 40
400	Sch 40
401	Sch 40
402	Sch 40
403	Sch 40
404	Sch 40
405	Sch 40
406	Sch 40
407	Sch 40
408	Sch 40
409	Sch 40
410	Sch 40
411	Sch 40
412	Sch 40
413	Sch 40
414	Sch 40
415	Sch 40
416	Sch 40
417	Sch 40
418	Sch 40
419	Sch 40
420	Sch 40
421	Sch 40
422	Sch 40
423	Sch 40
424	Sch 40
425	Sch 40
426	Sch 40
427	Sch 40
428	Sch 40
429	Sch 40
430	Sch 40
431	Sch 40
432	Sch 40
433	Sch 40
434	Sch 40
435	Sch 40
436	Sch 40
437	Sch 40
438	Sch 40
439	Sch 40
440	Sch 40
441	Sch 40
442	Sch 40
443	Sch 40
444	Sch 40
445	Sch 40
446	Sch 40
447	Sch 40
448	Sch 40
449	Sch 40
450	Sch 40
451	Sch 40
452	Sch 40
453	Sch 40
454	Sch 40
455	Sch 40
456	Sch 40
457	Sch 40
458	Sch 40
459	Sch 40
460	Sch 40
461	Sch 40
462	Sch 40