

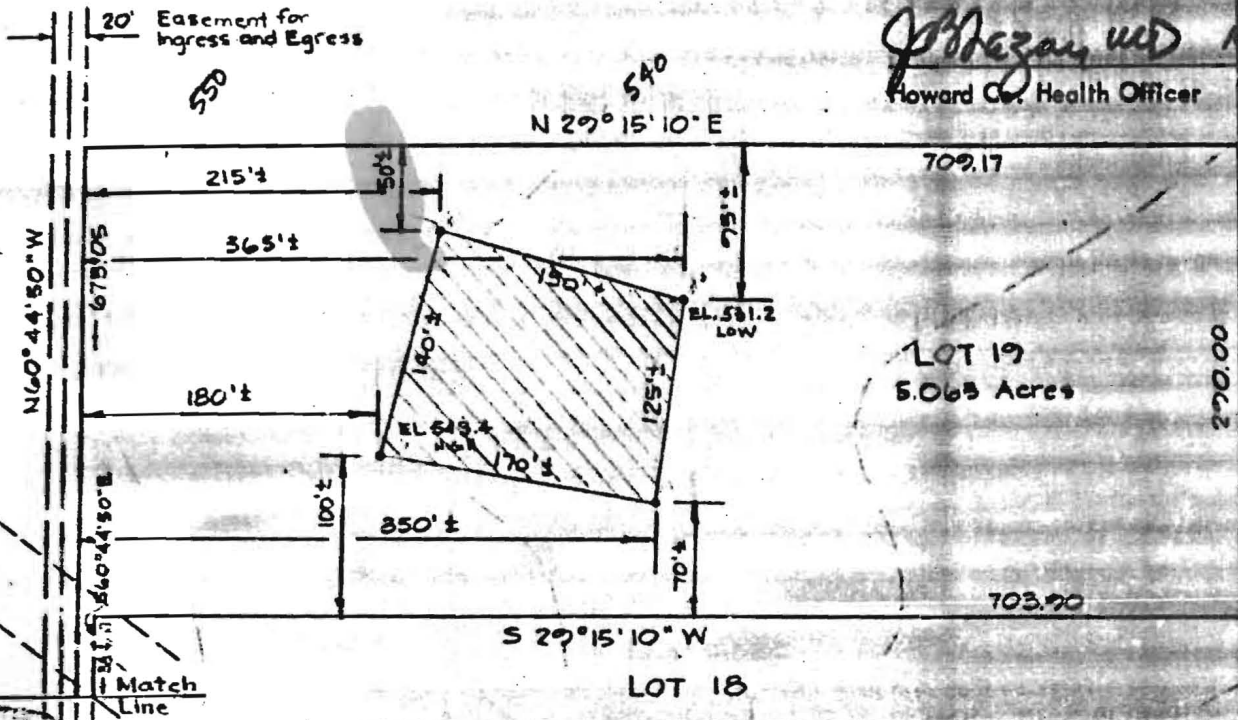
• = Parc Hole

The lot shown hereon complies with the minimum ownership and lot area as required by the Maryland State Health Department.

APPROVED: Private Water and Private Sewer

J. P. Hogan 10/29/74
Howard Co. Health Officer

LOT 20



REFERENCE



MERIDIAN

RICHARD P. BROWNE ASSOCIATES
CONSULTING ENGINEERS, PLANNERS
BAYNE, D.C. COLUMBIA, MD.

MAP OF PROPERTY OF
L.A.M. Inc.

SITUATED IN
3rd Election District Howard County, Md.

SCALE: 1" = 100'

DATE: 10-1-74

DRAWN: MK CHECKED: *JCH*

atch Line

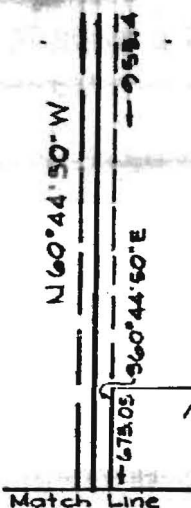
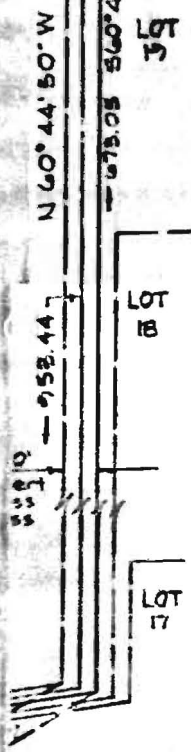
M.

The lot shown hereon complies with the minimum ownership and lot area as required by the Maryland State Health Department.

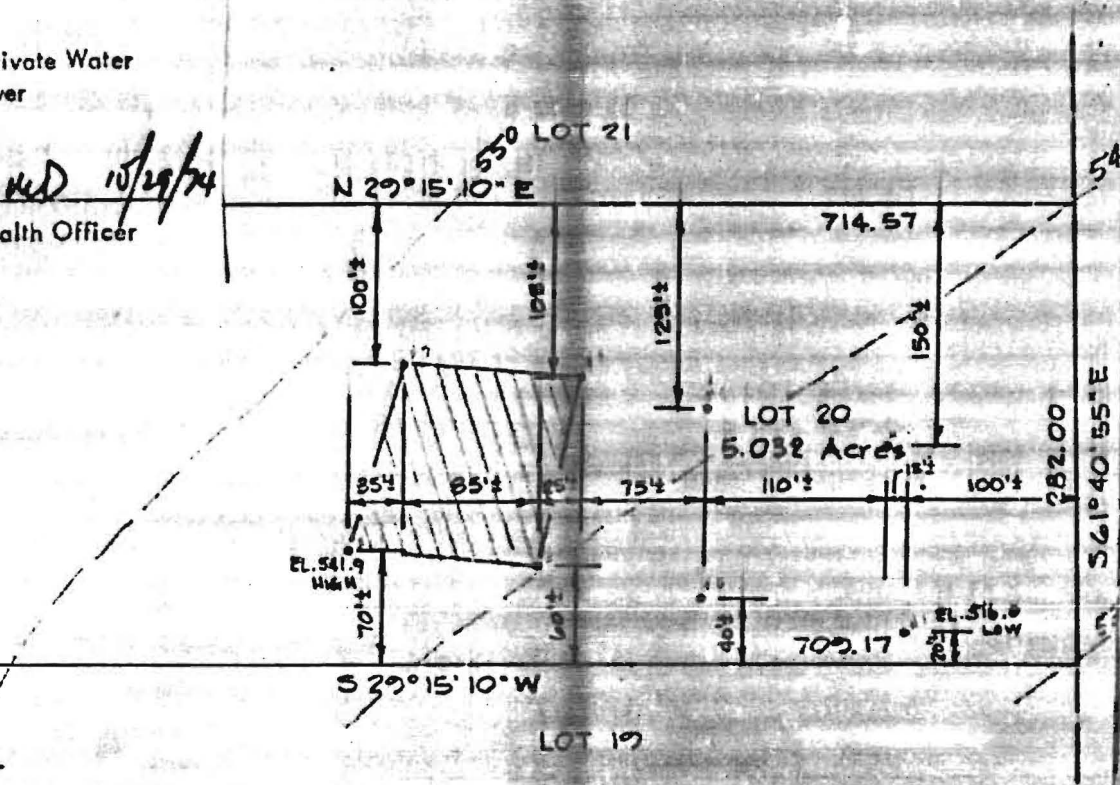
Owner: L.A.M. Inc. 4415 Old Court Road Pikesville, Md. Perc Hole

APPROVED: Private Water and Private Sewer

J.P. Browne 10/29/74
Howard Co. Health Officer



Match Line



REFERENCE



MERIDIAN

MAP OF PROPERTY OF L.A.M. Inc.

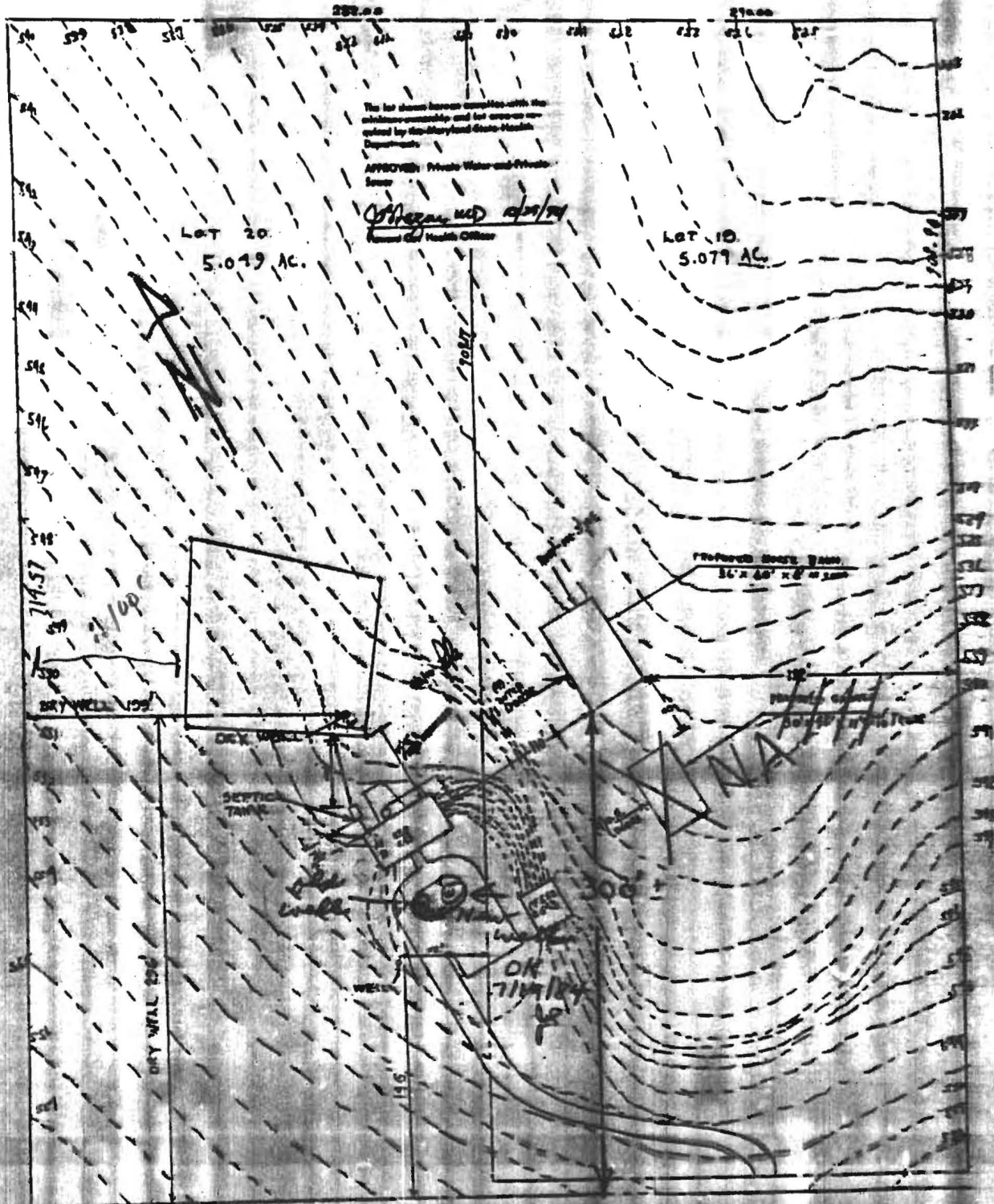
RICHARD P. BROWNE ASSOCIATES
CONSULTING ENGINEERS, PLANNERS
BETHESDA, D.C. COLLETON, MD.

SITUATED IN
3rd Election District Howard County, Md.

SCALE: 1" = 100'

DATE: 10-1-74

DRAWN: M.K. CHECKED: J.C.B.



The lot shown herein complies with the requirements and lot areas required by the Maryland State Health Department.

APPROVED: Private Water and Private Sewer

Officer, M.D. 12/19/74
 County Health Officer

LOT 20
 5.049 AC.

LOT 10
 5.079 AC.

PROPOSED DRAIN
 16' x 40' x 6' to 200'

PROPOSED CEMENT
 16' x 40' x 6' to 200'

OK
 7/11/74

see drawing on back