

# Mullinix Subdivision

#373

W/P

#370

Red Brown  
SL  
5-10%  
R4

2'

Red Brown  
Yellow  
FSL  
5-10%  
R4  
↓

13'

#371

Red Brown  
SL  
5-10%  
R4

4'

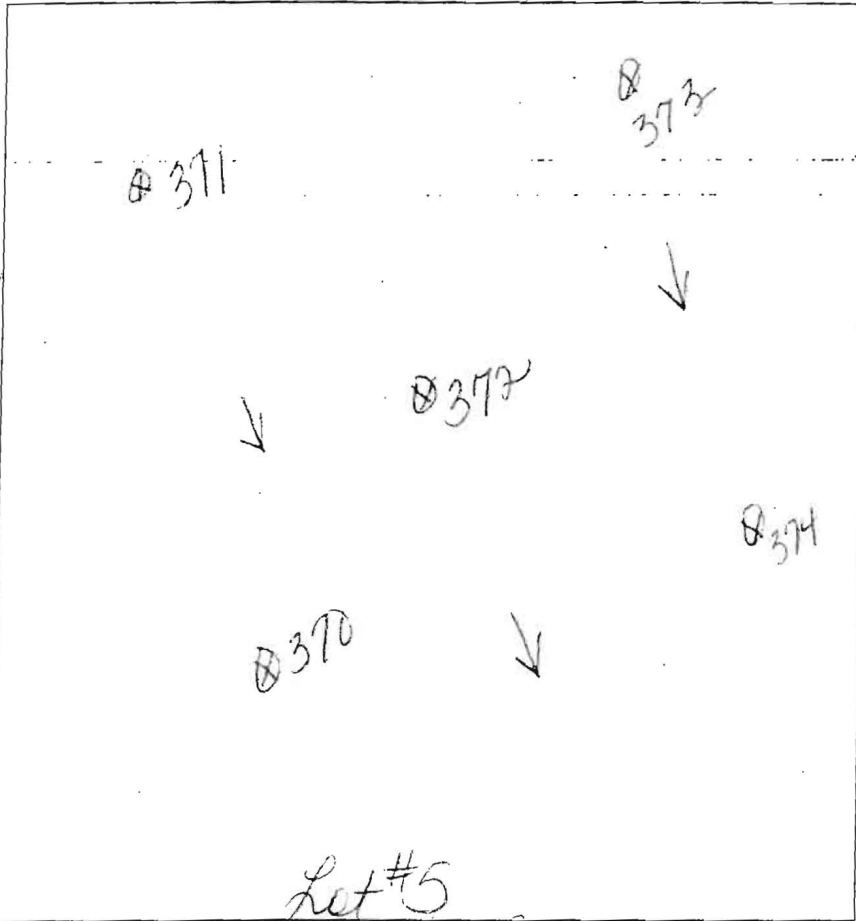
Red Brown  
Yellow  
FSL  
Silty  
5-10%  
R4

13'

#372

Red Brown  
SL  
5-10%  
R4  
↓  
FSL  
Red Brown  
Yellow  
5-10%  
R4  
↓

13'



Lot #5

Duwall Road

Red Brown  
SL  
5-10%  
R4

4'

Red Brown  
FSL  
Silty  
5-10%  
R4  
↓

13'

#374

Red Brown  
SL  
5-10%  
R4

4'

Red Brown  
FSL  
Silty  
5-10%  
R4  
↓

13'

DATE	TEST #	DEPTH	START	BREAK 1" DROP	STOP 2" DROP	TIME OF 2ND INCH	P/F/H
5-1-13	370	4.5/13	1:31	1:35	1:48	13 min	P
5-1-13	371	4.5/13	1:26	1:33	1:46	13 min	P
5-1-13	372	5/13	1:49	1:53	2:01	8 min	P
5-1-13	373	5/13	1:23	1:28	1:45	17 min	P
5-1-13	374	5/13	1:30	1:45	2:00	15 min	P

REMARKS

SANITARIAN D. Bernard BACKHOE Bruce OTHERS \_\_\_\_\_

TEST HOLES USED IN SDA 5 AVG. PERC TIME \_\_\_\_\_ SQ. FT/BR \_\_\_\_\_

TRENCH WIDTH \_\_\_\_\_ INLET DEPTH \_\_\_\_\_ MAX. BOT DEPTH \_\_\_\_\_ EFFECTIVE SW \_\_\_\_\_

