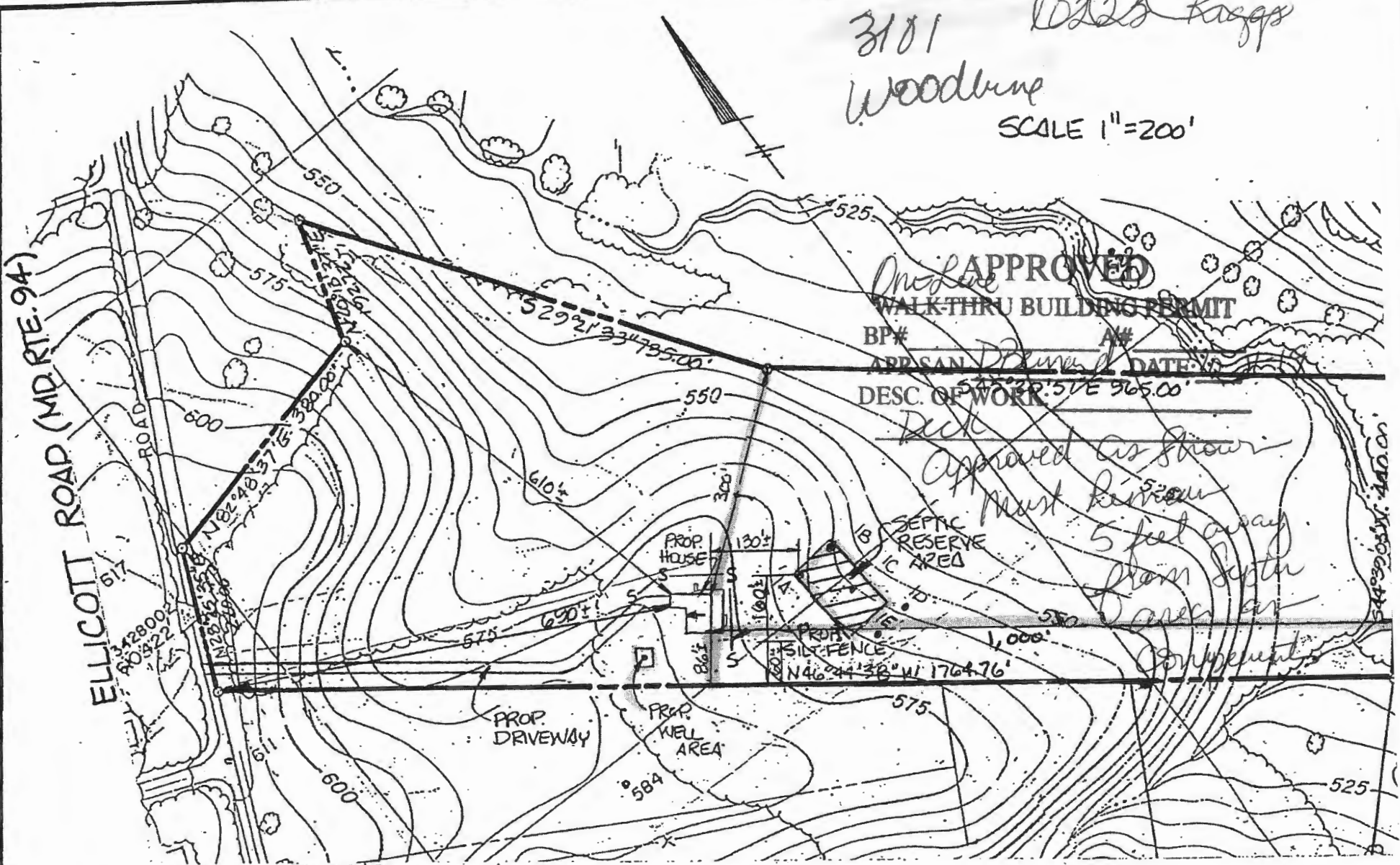


B19003440

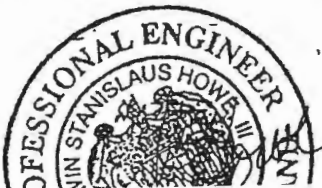
3101 10223 Riggs

Woodlume

SCALE 1"=200'



I CERTIFY THAT THE MEASUREMENTS SHOWN ON THIS PLAN ARE TRUE AND CORRECT BASED ON HOWARD COUNTY'S 1"=200' SCALE TOPOGRAPHY



**NOTES:**

1. THIS AREA DESIGNATES A PRIVATE SEWAGE EASEMENT OF 10,000 SQUARE FEET AS REQUIRED BY MARYLAND STATE DEPARTMENT OF THE ENVIRONMENT FOR INDIVIDUAL SEWAGE DISPOSAL. IMPROVEMENTS OF ANY NATURE IN THIS AREA ARE RESTRICTED UNTIL PUBLIC SEWAGE IS AVAILABLE. THESE EASEMENTS SHALL BECOME NULL AND VOID UPON CONNECTION TO A PUBLIC SEWAGE SYSTEM. THE COUNTY HEALTH OFFICER SHALL HAVE THE AUTHORITY TO GRANT VARIANCES FOR ENCROACHMENTS INTO THE PRIVATE SEWAGE EASEMENT AREA.

APPROVED: FOR PRIVATE WATER AND PRIVATE SEWERAGE SYSTEMS.  
HOWARD COUNTY HEALTH DEPARTMENT

9 1 2 1 ...