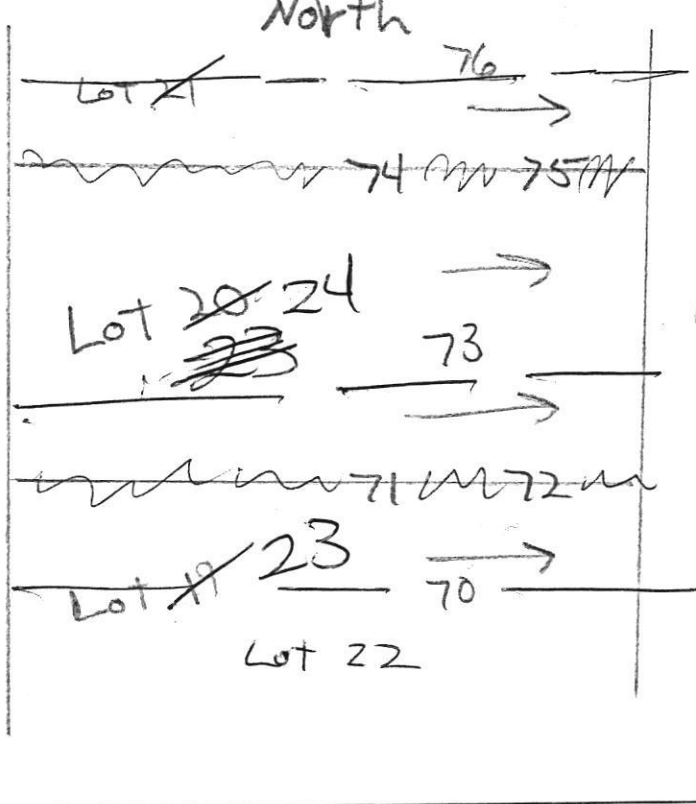


Lot 24

North



75

0.5' common mica
 1' thin platy few channers
 1' yellow ffs thin platy many mica few channers
 3' yellow red pale brn chls platy many mica
 4.5' pale yellow & pale brn ffs, many mica
 11' pale yellow chls, mzd (olk)
 13' water

72

0.8' dk brn L, ffsbk
 2.1' yel-red sl 2msbk (heavy)
 3.4' yel-brn sl 2esbk mica
 4.2' yel-red ls ffs, few channers few mica
 10.5' pale brn & pale yellow ffs, common mica
 14' blacky, many mica

73

2.8' dk brn sl, 2f
 brn sl, ffsbk
 yel-red sl, 2msbk
 brn chls
 thin relict plates
 3.8' brn & pale yellow ffs, many mica
 7.5' pale brn & pale yellow ffs, many mica
 14' ffs, many mica

74

0.2' brn L, 2msbk
 0.9' brn sl, 2msbk many mica
 2' red sl, 2msbk common mica
 4.5' pale brn & pale yellow ffs, thin platy many mica
 8.2' pale yellow ffs, thin platy

DATE	TEST #	DEPTH	START	BREAK 1" DROP	STOP 2" DROP	TIME OF 2ND INCH	P/F/H
10/23/14	72	4.7' / 14'	3:40	3:42	3:45	3	P
10/24/14	73	4.5' / 14'	9:40	9:48	9:49	6	P
10/24/14	74	4.3' / 14'	9:56	9:57	9:59	2	P
10/24/14	75	4.3' / 13'	10:06	10:08	10:13	5	P

REMARKS 73 edge

SANITARIAN R Buckley BACKHOE Donnie Pedro, Alfonso OTHERS Brandon Rowe

TEST HOLES USED IN SDA _____ AVG. PERC TIME _____ SQ. FT/BR _____

TRENCH WIDTH _____ INLET DEPTH _____ MAX. BOT DEPTH _____ EFFECTIVE SW _____

Lot 20

A/P

(67)

0.5' dk brn L, 2fg
brn L, 1msbk
yel-red sl
1fsbk common mica

1.1' brn & yel-red
chls, micaceous

2.1' pale brn lfs
1msbk many mica

2.8' yel-red & brn
lfs, many mica
10% channers

4' pale brn & pale
yellow

12' ls, many mica
Øm

14.5' yel-red & pale brn
ls, blocky
many mica

(69)

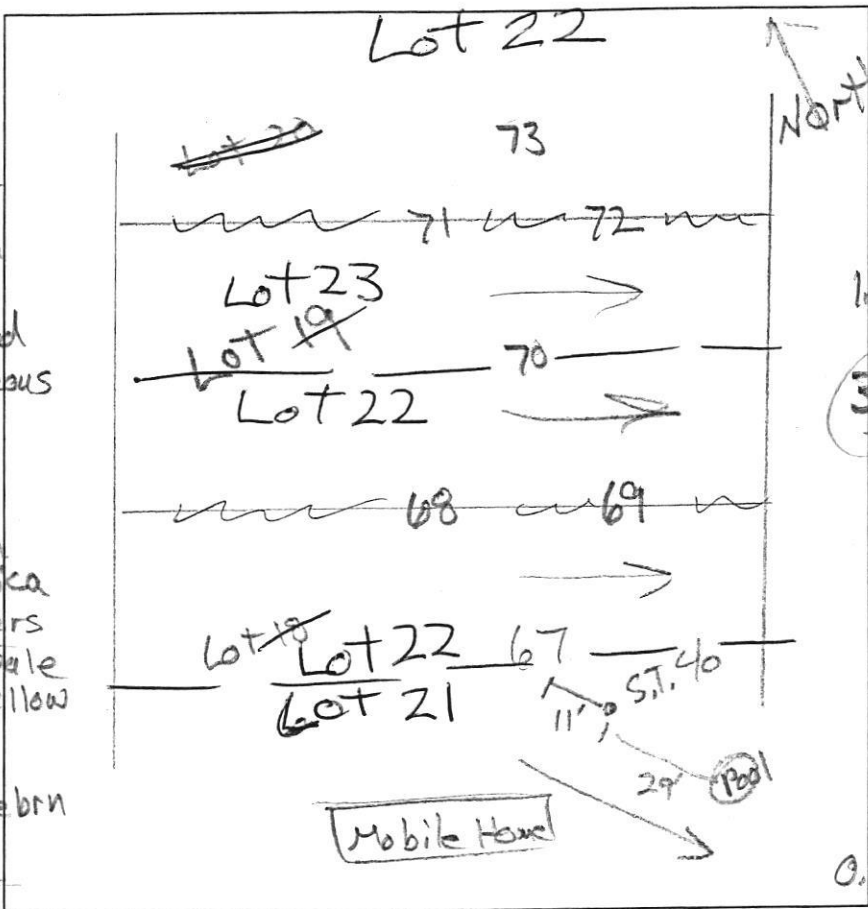
0.9' brn sl, 1fsbk
yel-red sl
2msbk (heavy)

15' lt. brn lfs
1msbk common mica

3.5' brn lfs, many mica
Øm

10' yel-red & pale
brn

13' lfs, blocky



(70)
dk brn L
3vfsbk
to brn L, 2fsbk
yel-red lfs
2msbk
1.6' yel-brn lfs
1fsbk
3.5' yel-red, pale
brn
& pale yellow
lfs, common
mica
2.2' pale brn lfs
many mica
15' 2d (dk. brn)

(68)

0.8' dk brn L
1fg to 2fsbk
yel-red sl
2fsbk, (heavy)

2' brn vchls
thin platy

2.6' yel-red lfs
common mica

3.5' pale brn
& pale yellow
lfs, common
mica

(71)

0.3' dk brn L, 2fsbk
1.5' yel-red sl, 2msbk
lt. brn lfs, 2fsbk
many mica

2.7' lt. brn vchls
many mica

4.5' pale brn &
pale yellow
lfs, common
mica

DATE	TEST #	DEPTH	START	BREAK 1" DROP	STOP 2" DROP	TIME OF 2ND INCH	P/F/H
10/23/14	67	4.3' / 4.5'	2:18	2:20	2:23	3	P
10/23/14	69	4' / 13'	2:41	2:43	2:46	3	P
10/23/14	70	4' / 15'	2:54	2:56	2:59	3	P
10/23/14	68	4.3' / 3.5'	3:11	3:13	3:16	3	P
10/23/14	71	4.5' / 13'	3:24	3:26	3:29	3	P

REMARKS #69 next to trench (dry)

SANITARIAN Bricker BACKHOE Hot Field's (Donnie) OTHERS R. Lane

TEST HOLES USED IN SDA _____ AVG. PERC TIME _____ SQ. FT/BR _____

TRENCH WIDTH _____ INLET DEPTH _____ MAX. BOT DEPTH _____ EFFECTIVE SW _____

Lot 19 & 18