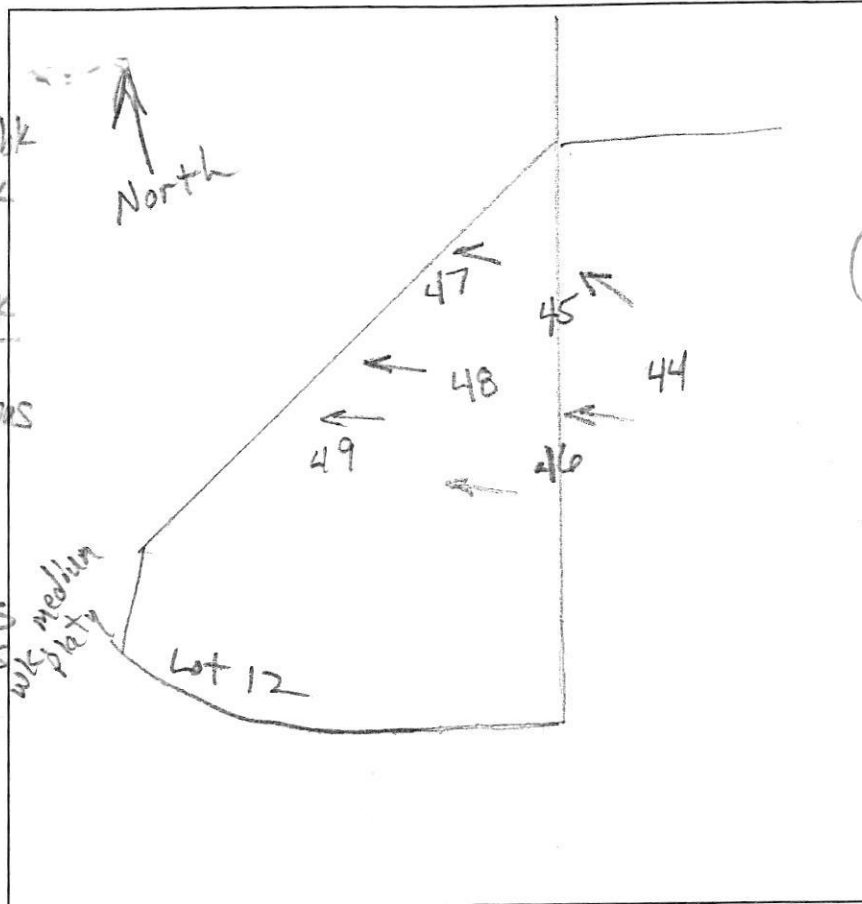


49

0.7' dk brn L, 1 fsl
brn L, 1 fslbk
2.3' red-brn
2 fslbk to 2 msbk
3' brn fsl
w/ red inclusions
fsl, 2 msbk
few channers
few mica
6.5' yel-red
& pale brn ls
few channers
few mica
14' H. brn chls
many mica



48
dk sl, 1 fg
brn sl, 1 fslbk
1.2' brn L, 1 fslbk
3' red-brn fsl
2 msbk - few mica
yellow-red
1 1/2' brn chls
thin platy
common mica
4' pale brn
& pale red fsl
many mica
7.5' H. brn fsl
many mica
few channers
13'

46

dk brn fsl, 1 fg
brn fsl, 1 fslbk
1.3' to 2 fslbk
red brn fsl
2 fslbk
3' brn fsl, 2 fslbk
common mica
4' yel-red & H. brn
fsl, thin platy
many mica
14'

45

dk brn sl, 1 fg
brn L, 2 fslbk
to 2 msbk
1.5' red-brn fsl
2 msbk
3.2' red-brn &
H. brn chls
thin platy
common mica
4' brn, pale brn
& pale yellow
fsl, com many
mica

47

0.7' dk brn sl, 1 fg
brn fsl, 1 fslbk
brn fsl, 2 fslbk
few mica
1.7' red brn fsl
2 fslbk, dense
3.2' yel-red chsl
common
com. mica
4' yellow-red
& H. brn fsl, com
common mica
6.5' H. brn fsl
com. mica
few channers
14'

DATE	TEST #	DEPTH	START	BREAK 1" DROP	STOP 2" DROP	TIME OF 2ND INCH	P/F/H
11/12/14	49	4.5' / 14'	11:02	11:04	11:05	2	Repair
Repair	49	4.5' / 14'	0	1.3	3.3	2	P
11/12/14	47	4' / 14'	11:17	11:21	11:34	13	P
11/12/14	48	5.5' / 12'	11:36	11:38	11:41	3	P
11/12/14	46	4.5' / 14'	11:48	11:50	11:53	3	P
11/12/14	45	4.5' / 14'	12:02	12:04	12:07	3	P

REMARKS _____
 SANITARIAN R Bricker BACKHOE Hatfield's OTHERS Donnie
 TEST HOLES USED IN SDA _____ AVG. PERC TIME 14 ISO: FT/BR Art Jason
 TRENCH WIDTH _____ INLET DEPTH _____ MAX. BOT DEPTH _____ EFFECTIVE SW _____

Lot 12