

Record Detail * (This section is required.)

Permit Type	Permit Number	Opened Date
Building/Residential/New/SFD	B25001037	03/20/2025
Description of Work		
SFD/ WELLINGTON/, 2 STORY, Full Basement, Basement = Full Finished, 14R, 6FB, 1HB, 2FP, 3 Car Attached, 5BR, N/A, ENERGY METHOD = Prescriptive Method, null.		

Approved 4/10/2025
RME

Online BP.

3/27/25

[check spelling](#)

Address * (This section is required.)

Search Reset Clear Get Parcel & Owner

Street #	Street Name	Street Type
4252	MAISEL FARM	LN
Unit Type	Unit #	X Coordinate
-Select-		-76.96198
		Y Coordinate
		39.25418
City	State	Zip Code
ELLICOTT CITY	MD	21042
	Primary	
	Yes	

Parcel * (This section is required.)

Search Reset Clear Get Address & Owner

GIS ID *	Parcel	Parcel Area	Land Value	Improved Value	Exemption Value	Plan Area
890762	535	4.21	103100	188100	0	RURAL
Legal Description						
LOT 63 5.421 A []4254 MAISEL FARM LN []BUCKSKIN WOODS S1 A2						

[check spelling](#)

Block	Lot	Census Tract	Council Dist	Inspection Dist	Supervisor Dist	Map #	DAP Zone
	69	605101	5				
Plan Area	State Tax id	Subdivision Name					
	1405415195	BUCKSKIN WOODS					
Section	Area	Tax Map					
		22					
Grid	Zoning District	ADC Map					
22-22	RR-DEO	4813-G10					
SDP No.	Final Plan No.	WP File No.					
	F-02-075						
Record Plat No.	WS Contract No.	FDP No.	Primary				
26701			Yes				
Owner Occupied	Year Built	Historic District					
<input type="radio"/> Yes <input checked="" type="radio"/> No	0	<input type="radio"/> Yes <input checked="" type="radio"/> No					
Historic District Registry No.	Stat Area	Flood Plain					
	5-02A	<input type="radio"/> Yes <input checked="" type="radio"/> No					
Building No							

Owner (This section is not required.)

Search Reset Clear

Name *

WILLIA

Address Line 1

5485 Harpers Farm Road

Address Line 2

Address Line 3

Mail City

Columbia

Mail State

MD

Mail Zip Code

21044

Phone

410-997-8800

Primary

Yes

E-mail

chriswine@williamstjrgllc.com

Cell Number Fax Number

Professionals (This section is not required.)

License # *
 155
License Type *
 Home Bldr
Primary
 Yes

Business Name
 Williamsburg Group LLC
First Name Middle Name Last Name
 Bruce A Harvey
Address Line 1
 5485 Harpers Farm Road
Address Line 2

City State ZIP Code
 Columbia MD 21044
Phone 1 Phone 2 Fax
 410-997-8800
E-mail
 chriswine@williamsburgllc.com

Applicant (This section is not required.)

Search As Owner As Lic. Prof As Contact

Type *
 Applicant
Relationship
 Applicant
Primary
 No

First Name MI Last Name
 Christine M Wine
Full Name
 Christine M Wine
Organization Name
 Williamsburg Group LLC
Street Address
 5485 Harpers Farm Road, Suite 200
Address Line 2

City State Zip Code
 Columbia MD 21044
Phone Cell Fax
 4109978800
E-mail *
 chriswine@williamsburgllc.com

Contact (This section is not required.)

Search As Owner As Lic. Prof As Contact

Type
 Contact
Relationship
 Licensed Professional
Primary
 Yes

First Name MI Last Name
 Christine M Wine
Full Name
 Christine M Wine
Organization Name
 Williamsburg Group LLC
Street Address
 5485 Harpers Farm Road, Suite 200
Address Line 2

City State Zip Code
 Columbia MD 21044
Phone Cell Fax
 4109978800
E-mail
 chriswine@williamsburgllc.com

Addtl Info

Est Construction Cost * Housing Units * Number of Buildings * Public Owned
 1208000 1 1 No
Construction Type
 101 - Single Family Houses Detached

BUILDING INFORMATION

BUILDING INFORMATION

Capital Project-No Fee * Capital Project # Fee Exempt * Roadside Tree Project Permit Roadside Tree Project Permit #

Yes No
 Yes No

Condominium Yes No
 Existing Use (Text) Vacant Lot Yes No
 Model * SFD/ WELLINGTON/

No of Stories * 2 (Text)
 Foundation * Full Basement
 Basement Full Finished
 No of Rooms * 14 (Text)
 Full Baths * 6 (Number)
 Half Baths * 1 (Number)
 Oth * 3 (Number)

Bedrooms * 5 (Number)
 Porch Deck N/A
 No of Fireplaces * 2 (Number)
 Type of Fireplace Prefab
 Energy Code Prescriptive Method

W&S Fees Paid Yes No
 Water Supply * Private
 Sewage Disposal * Private
 Utilities * Electric
 Heating System * Electric & Natural Gas
 Sprinkler S: NFFPA #13C

1st Floor Width 84 FT (Number)
 1st Floor Depth 63 FT (Number)
 2nd Floor Width 67 FT (Number)
 2nd Floor Depth 42 FT (Number)
 Basement Width 84 FT (Number)
 Basement Depth 63 FT (Number)
 Height FT

Building Construction Type Conventional
 Location Survey Approval Date
 Road Frontage County
 Expiration Date 9/21/2025
 Additional Description Info

U&O Issued On
 U & O Comments

[check spelling](#)

GRADING INFORMATION

Grading Permit No * G25000039 (Text)
 Grading Certification Required Yes No
 Grading Certification Received in DILP On
 Grading Certification
 Grading Certification Comments
 Seasonal Surety Comments

[check spelling](#)

[check spelling](#)

Seasonal Grading Surety Depositor (Text)
 Driveway Apron Surety Depositor (Text)
 Stormwater Surety Depositor

GREEN NEIGHBORHOOD INFORMATION

Check List Points Goal (Text)
 Check List Points Achieved (Text)
 Date of Certification

PRIVATE ON LOT SWM FACILITIES

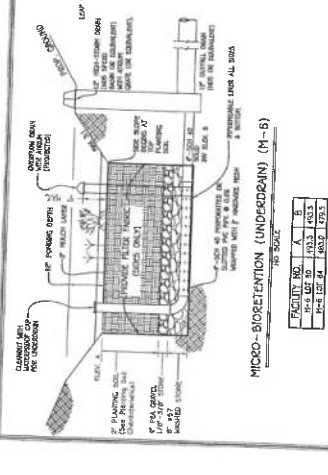
Green Roofs A1 Yes No
 Permeable Pavements A2 Yes No
 Reinforced Turf A3 Yes No
 Disconnection of Rooftop Runoff N1 (Number)
 Disconnection of Non Rooftop Runoff N2 Yes No
 Sheetflow to Conservation Areas N3 Yes No
 Rainwater Harvesting M1 (Number)
 Submerged Gravel Wetlands M2 (Number)
 Landscape Infiltration M3 (Number)
 Infiltration Berms M4 (Number)
 Dry Wells M5 (Number)
 Micro Bioretention M6 (Number)
 Rain Gardens M7 (Number)
 Swales M8 (Number)
 Enhanced Filters M9 (Number)

Related Records

Showing 1-2 of 2

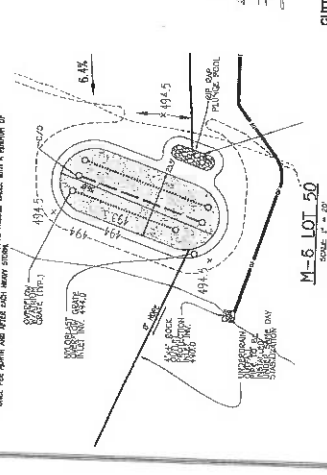
Permit Number	Record Type Alias	Status	Number	Street Name	Opened Date	Description
G25000039	Residential Grading Permit	Application Accepted	4252	MAISEL FARM	03/20/2025	BUCKSKIN WOODS/ GRADING AND SEDIMENT C
B25001037	Residential New Single Family Dwelling Permit	Review In Process	4252	MAISEL FARM	03/20/2025	SFD/ WELLINGTON/, 2 STORY, Full Basement, Ba

Submit Cancel



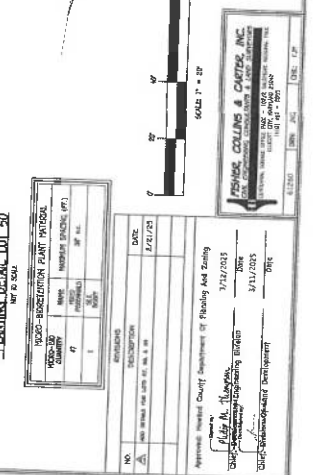
OPERATION & MAINTENANCE SCHEDULE FOR MICRO-BIORETENTION (M-6)

ITEM	A	B	C
1. VISUAL INSPECTION	12 MONTHS	12 MONTHS	12 MONTHS
2. DEBRIS REMOVAL	12 MONTHS	12 MONTHS	12 MONTHS
3. PLANT MAINTENANCE	12 MONTHS	12 MONTHS	12 MONTHS
4. SOIL SAMPLING	12 MONTHS	12 MONTHS	12 MONTHS
5. WATER SAMPLING	12 MONTHS	12 MONTHS	12 MONTHS



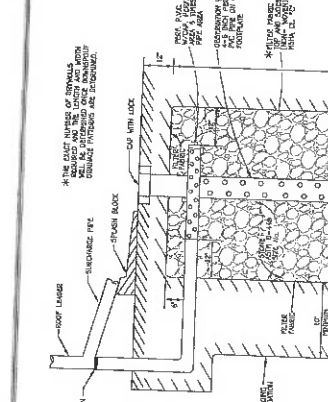
OPERATION & MAINTENANCE SCHEDULE FOR MICRO-BIORETENTION (M-5)

ITEM	A	B	C
1. VISUAL INSPECTION	12 MONTHS	12 MONTHS	12 MONTHS
2. DEBRIS REMOVAL	12 MONTHS	12 MONTHS	12 MONTHS
3. PLANT MAINTENANCE	12 MONTHS	12 MONTHS	12 MONTHS
4. SOIL SAMPLING	12 MONTHS	12 MONTHS	12 MONTHS
5. WATER SAMPLING	12 MONTHS	12 MONTHS	12 MONTHS



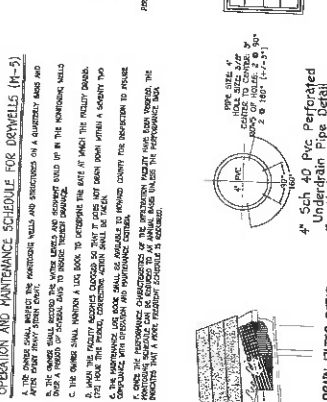
OPERATION & MAINTENANCE SCHEDULE FOR MICRO-BIORETENTION (M-6)

ITEM	A	B	C
1. VISUAL INSPECTION	12 MONTHS	12 MONTHS	12 MONTHS
2. DEBRIS REMOVAL	12 MONTHS	12 MONTHS	12 MONTHS
3. PLANT MAINTENANCE	12 MONTHS	12 MONTHS	12 MONTHS
4. SOIL SAMPLING	12 MONTHS	12 MONTHS	12 MONTHS
5. WATER SAMPLING	12 MONTHS	12 MONTHS	12 MONTHS



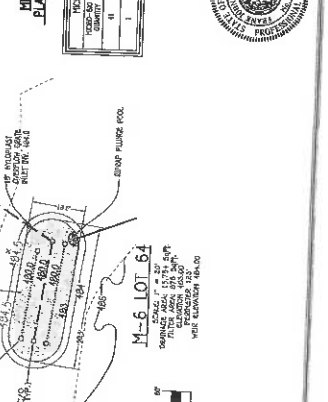
OPERATION & MAINTENANCE SCHEDULE FOR DRYWELLS (M-5)

ITEM	A	B	C
1. VISUAL INSPECTION	12 MONTHS	12 MONTHS	12 MONTHS
2. DEBRIS REMOVAL	12 MONTHS	12 MONTHS	12 MONTHS
3. PLANT MAINTENANCE	12 MONTHS	12 MONTHS	12 MONTHS
4. SOIL SAMPLING	12 MONTHS	12 MONTHS	12 MONTHS
5. WATER SAMPLING	12 MONTHS	12 MONTHS	12 MONTHS



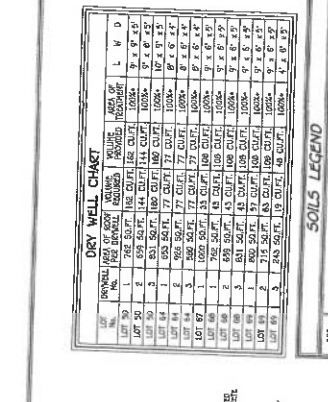
OPERATION & MAINTENANCE SCHEDULE FOR GUTTER DRAIN FILTER (M-5)

ITEM	A	B	C
1. VISUAL INSPECTION	12 MONTHS	12 MONTHS	12 MONTHS
2. DEBRIS REMOVAL	12 MONTHS	12 MONTHS	12 MONTHS
3. PLANT MAINTENANCE	12 MONTHS	12 MONTHS	12 MONTHS
4. SOIL SAMPLING	12 MONTHS	12 MONTHS	12 MONTHS
5. WATER SAMPLING	12 MONTHS	12 MONTHS	12 MONTHS



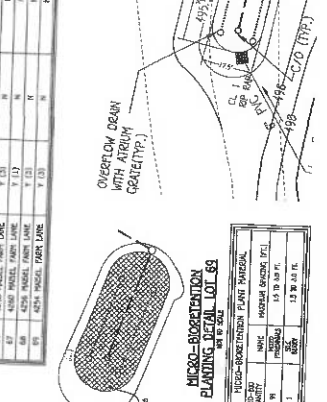
OPERATION & MAINTENANCE SCHEDULE FOR MICRO-BIORETENTION (M-6)

ITEM	A	B	C
1. VISUAL INSPECTION	12 MONTHS	12 MONTHS	12 MONTHS
2. DEBRIS REMOVAL	12 MONTHS	12 MONTHS	12 MONTHS
3. PLANT MAINTENANCE	12 MONTHS	12 MONTHS	12 MONTHS
4. SOIL SAMPLING	12 MONTHS	12 MONTHS	12 MONTHS
5. WATER SAMPLING	12 MONTHS	12 MONTHS	12 MONTHS



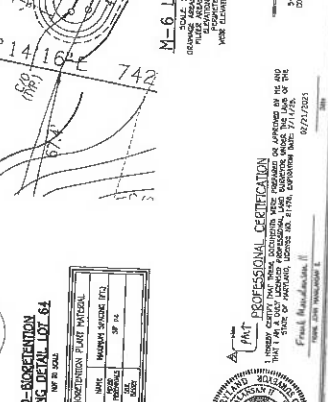
OPERATION & MAINTENANCE SCHEDULE FOR MICRO-BIORETENTION (M-6)

ITEM	A	B	C
1. VISUAL INSPECTION	12 MONTHS	12 MONTHS	12 MONTHS
2. DEBRIS REMOVAL	12 MONTHS	12 MONTHS	12 MONTHS
3. PLANT MAINTENANCE	12 MONTHS	12 MONTHS	12 MONTHS
4. SOIL SAMPLING	12 MONTHS	12 MONTHS	12 MONTHS
5. WATER SAMPLING	12 MONTHS	12 MONTHS	12 MONTHS



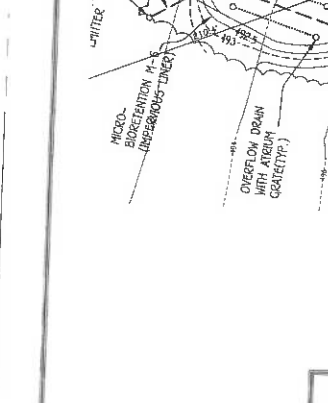
OPERATION & MAINTENANCE SCHEDULE FOR MICRO-BIORETENTION (M-6)

ITEM	A	B	C
1. VISUAL INSPECTION	12 MONTHS	12 MONTHS	12 MONTHS
2. DEBRIS REMOVAL	12 MONTHS	12 MONTHS	12 MONTHS
3. PLANT MAINTENANCE	12 MONTHS	12 MONTHS	12 MONTHS
4. SOIL SAMPLING	12 MONTHS	12 MONTHS	12 MONTHS
5. WATER SAMPLING	12 MONTHS	12 MONTHS	12 MONTHS



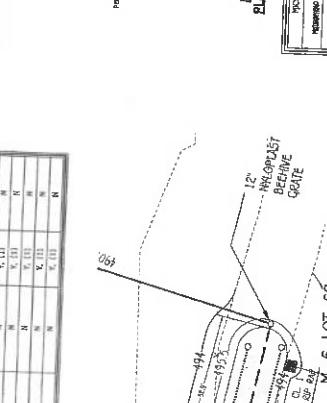
OPERATION & MAINTENANCE SCHEDULE FOR MICRO-BIORETENTION (M-6)

ITEM	A	B	C
1. VISUAL INSPECTION	12 MONTHS	12 MONTHS	12 MONTHS
2. DEBRIS REMOVAL	12 MONTHS	12 MONTHS	12 MONTHS
3. PLANT MAINTENANCE	12 MONTHS	12 MONTHS	12 MONTHS
4. SOIL SAMPLING	12 MONTHS	12 MONTHS	12 MONTHS
5. WATER SAMPLING	12 MONTHS	12 MONTHS	12 MONTHS



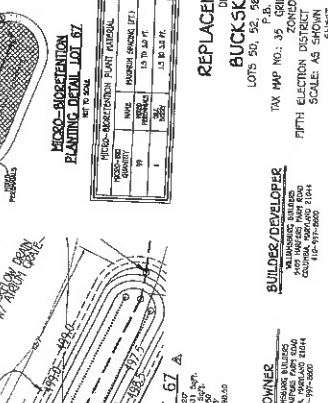
OPERATION & MAINTENANCE SCHEDULE FOR MICRO-BIORETENTION (M-6)

ITEM	A	B	C
1. VISUAL INSPECTION	12 MONTHS	12 MONTHS	12 MONTHS
2. DEBRIS REMOVAL	12 MONTHS	12 MONTHS	12 MONTHS
3. PLANT MAINTENANCE	12 MONTHS	12 MONTHS	12 MONTHS
4. SOIL SAMPLING	12 MONTHS	12 MONTHS	12 MONTHS
5. WATER SAMPLING	12 MONTHS	12 MONTHS	12 MONTHS



OPERATION & MAINTENANCE SCHEDULE FOR MICRO-BIORETENTION (M-6)

ITEM	A	B	C
1. VISUAL INSPECTION	12 MONTHS	12 MONTHS	12 MONTHS
2. DEBRIS REMOVAL	12 MONTHS	12 MONTHS	12 MONTHS
3. PLANT MAINTENANCE	12 MONTHS	12 MONTHS	12 MONTHS
4. SOIL SAMPLING	12 MONTHS	12 MONTHS	12 MONTHS
5. WATER SAMPLING	12 MONTHS	12 MONTHS	12 MONTHS



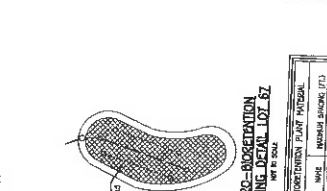
OPERATION & MAINTENANCE SCHEDULE FOR MICRO-BIORETENTION (M-6)

ITEM	A	B	C
1. VISUAL INSPECTION	12 MONTHS	12 MONTHS	12 MONTHS
2. DEBRIS REMOVAL	12 MONTHS	12 MONTHS	12 MONTHS
3. PLANT MAINTENANCE	12 MONTHS	12 MONTHS	12 MONTHS
4. SOIL SAMPLING	12 MONTHS	12 MONTHS	12 MONTHS
5. WATER SAMPLING	12 MONTHS	12 MONTHS	12 MONTHS



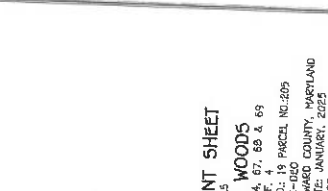
OPERATION & MAINTENANCE SCHEDULE FOR MICRO-BIORETENTION (M-6)

ITEM	A	B	C
1. VISUAL INSPECTION	12 MONTHS	12 MONTHS	12 MONTHS
2. DEBRIS REMOVAL	12 MONTHS	12 MONTHS	12 MONTHS
3. PLANT MAINTENANCE	12 MONTHS	12 MONTHS	12 MONTHS
4. SOIL SAMPLING	12 MONTHS	12 MONTHS	12 MONTHS
5. WATER SAMPLING	12 MONTHS	12 MONTHS	12 MONTHS



OPERATION & MAINTENANCE SCHEDULE FOR MICRO-BIORETENTION (M-6)

ITEM	A	B	C
1. VISUAL INSPECTION	12 MONTHS	12 MONTHS	12 MONTHS
2. DEBRIS REMOVAL	12 MONTHS	12 MONTHS	12 MONTHS
3. PLANT MAINTENANCE	12 MONTHS	12 MONTHS	12 MONTHS
4. SOIL SAMPLING	12 MONTHS	12 MONTHS	12 MONTHS
5. WATER SAMPLING	12 MONTHS	12 MONTHS	12 MONTHS



OPERATION & MAINTENANCE SCHEDULE FOR MICRO-BIORETENTION (M-6)

ITEM	A	B	C
1. VISUAL INSPECTION	12 MONTHS	12 MONTHS	12 MONTHS
2. DEBRIS REMOVAL	12 MONTHS	12 MONTHS	12 MONTHS
3. PLANT MAINTENANCE	12 MONTHS	12 MONTHS	12 MONTHS
4. SOIL SAMPLING	12 MONTHS	12 MONTHS	12 MONTHS
5. WATER SAMPLING	12 MONTHS	12 MONTHS	12 MONTHS



OPERATION & MAINTENANCE SCHEDULE FOR MICRO-BIORETENTION (M-6)

ITEM	A	B	C
1. VISUAL INSPECTION	12 MONTHS	12 MONTHS	12 MONTHS
2. DEBRIS REMOVAL	12 MONTHS	12 MONTHS	12 MONTHS
3. PLANT MAINTENANCE	12 MONTHS	12 MONTHS	12 MONTHS
4. SOIL SAMPLING	12 MONTHS	12 MONTHS	12 MONTHS
5. WATER SAMPLING	12 MONTHS	12 MONTHS	12 MONTHS



OPERATION & MAINTENANCE SCHEDULE FOR MICRO-BIORETENTION (M-6)

ITEM	A	B	C
1. VISUAL INSPECTION	12 MONTHS	12 MONTHS	12 MONTHS
2. DEBRIS REMOVAL	12 MONTHS	12 MONTHS	12 MONTHS
3. PLANT MAINTENANCE	12 MONTHS	12 MONTHS	12 MONTHS
4. SOIL SAMPLING	12 MONTHS	12 MONTHS	12 MONTHS
5. WATER SAMPLING	12 MONTHS	12 MONTHS	12 MONTHS



OPERATION & MAINTENANCE SCHEDULE FOR MICRO-BIORETENTION (M-6)

ITEM	A	B	C
1. VISUAL INSPECTION	12 MONTHS	12 MONTHS	12 MONTHS
2. DEBRIS REMOVAL	12 MONTHS	12 MONTHS	12 MONTHS
3. PLANT MAINTENANCE	12 MONTHS	12 MONTHS	12 MONTHS
4. SOIL SAMPLING	12 MONTHS	12 MONTHS	12 MONTHS
5. WATER SAMPLING	12 MONTHS	12 MONTHS	12 MONTHS

REPLACEMENT SHEET
BUCKSKIN WOODS
 DETAILS
 LOTS 50, 52, 58, 64, 67, 69 & 83
 TWP MAP NO.: 35 ZONED M-C-18 PARCEL NO.: 205
 CITY: ELECTION DISTRICT HOWARD COUNTY, MARYLAND
 SCALE: AS SHOWN DATE: JANUARY, 2005
 SHEET 4 OF 4

BUILDER/DEVELOPER
 WASHINGTON DISTRICT
 5400 BRIDGEWAY, SUITE 200
 COLUMBIA, MARYLAND 21044
 (410) 992-2000

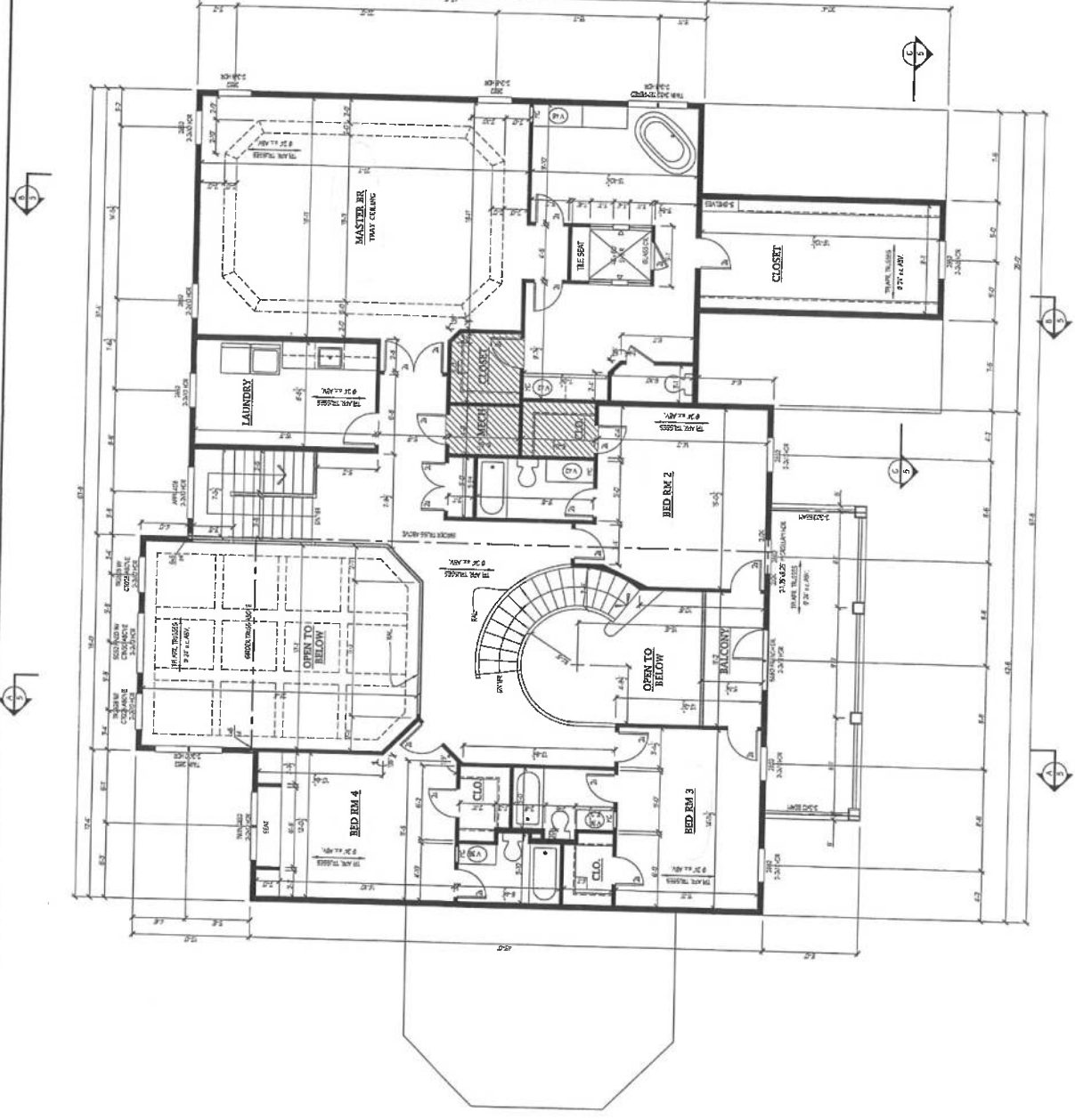
OWNER
 WASHINGTON DISTRICT
 5400 BRIDGEWAY, SUITE 200
 COLUMBIA, MARYLAND 21044
 (410) 992-2000

PROFESSIONAL CERTIFICATION
 I, **FRANK R. COLLINS**, P.E.,
 STATE OF MARYLAND, LICENSE NO. 4170, EXPIRES DATE: 7/1/05
 02/27/2005

FRANK R. COLLINS & COMPANY, INC.
 1100 W. WASHINGTON STREET, SUITE 200
 ANNAPOLIS, MARYLAND 21403
 (410) 293-1100

DATE	REVISION

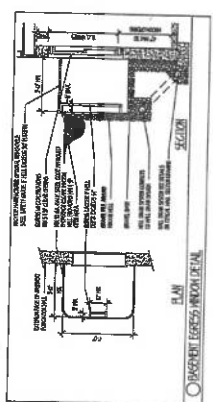
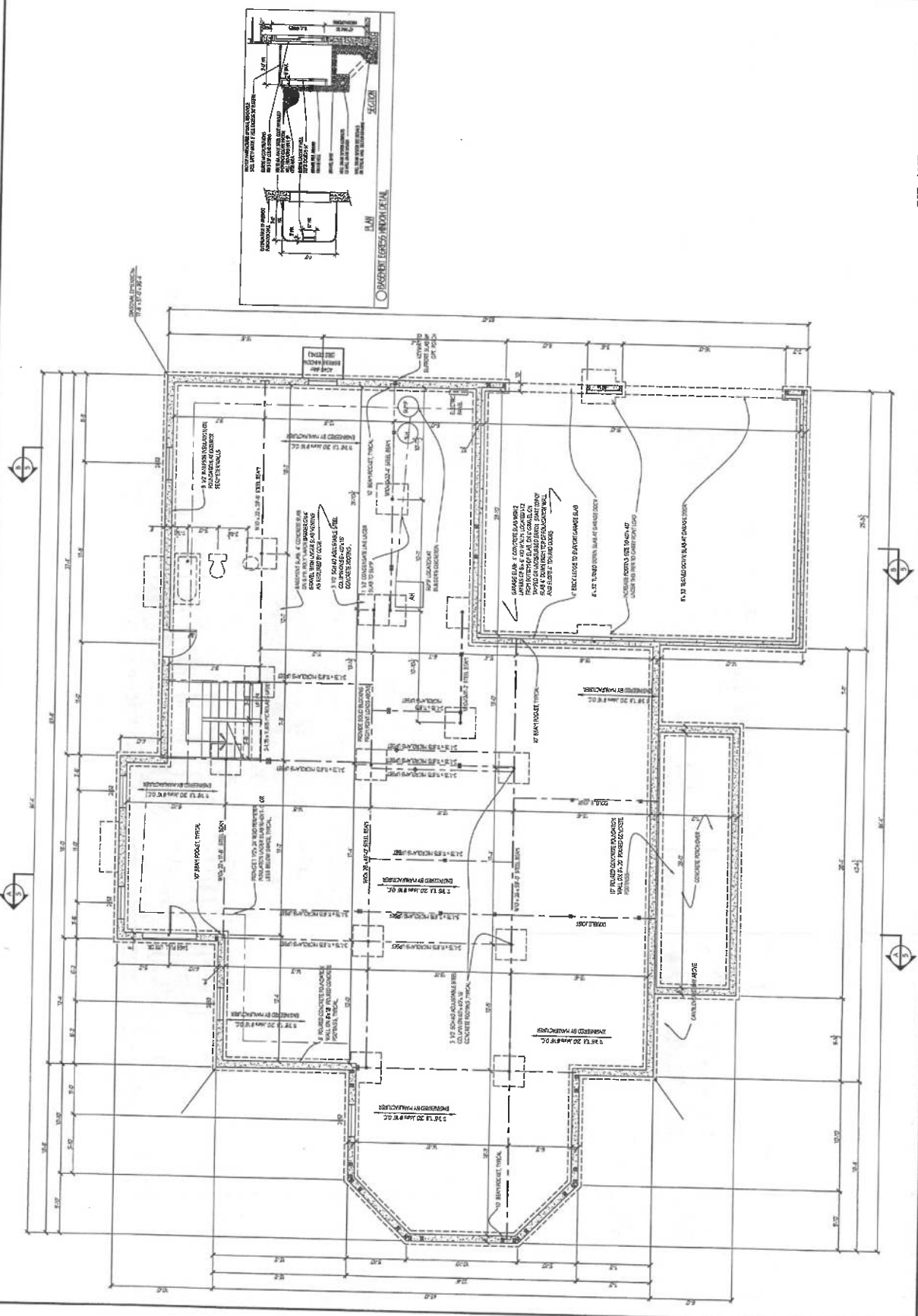
NOTES
 1. ROOMS IN DIMENSIONAL AREAS AT THE UNLESS NOTED OTHERWISE.
 2. ALL DIMENSION WALLS TO BE 2" x 8" S.P.C. ALL INTERIOR WALLS TO BE 2" x 4" S.P.C.
 3. DOOR SWINGS AS SHOWN UNLESS NOTED OTHERWISE.
 4. ALL DIMENSIONS ARE TO FACE UNLESS NOTED OTHERWISE.
 5. ALL DIMENSIONS ARE TO FACE UNLESS NOTED OTHERWISE.



DATE	REVISION

DATE: 10/15	SCALE: 1/4"=1'-0"	DRAWN: TMM
DRAWING: STD. BSMT./FOUNDATION PLAN		
PROJECT: WILLIAMSBURG GROUP WELLINGTON ESTATE HOME		
W23 WE		

Project No. **2a**



BID AND PERMIT 12.12.24

2b

BID AND PERMIT 12.12.24

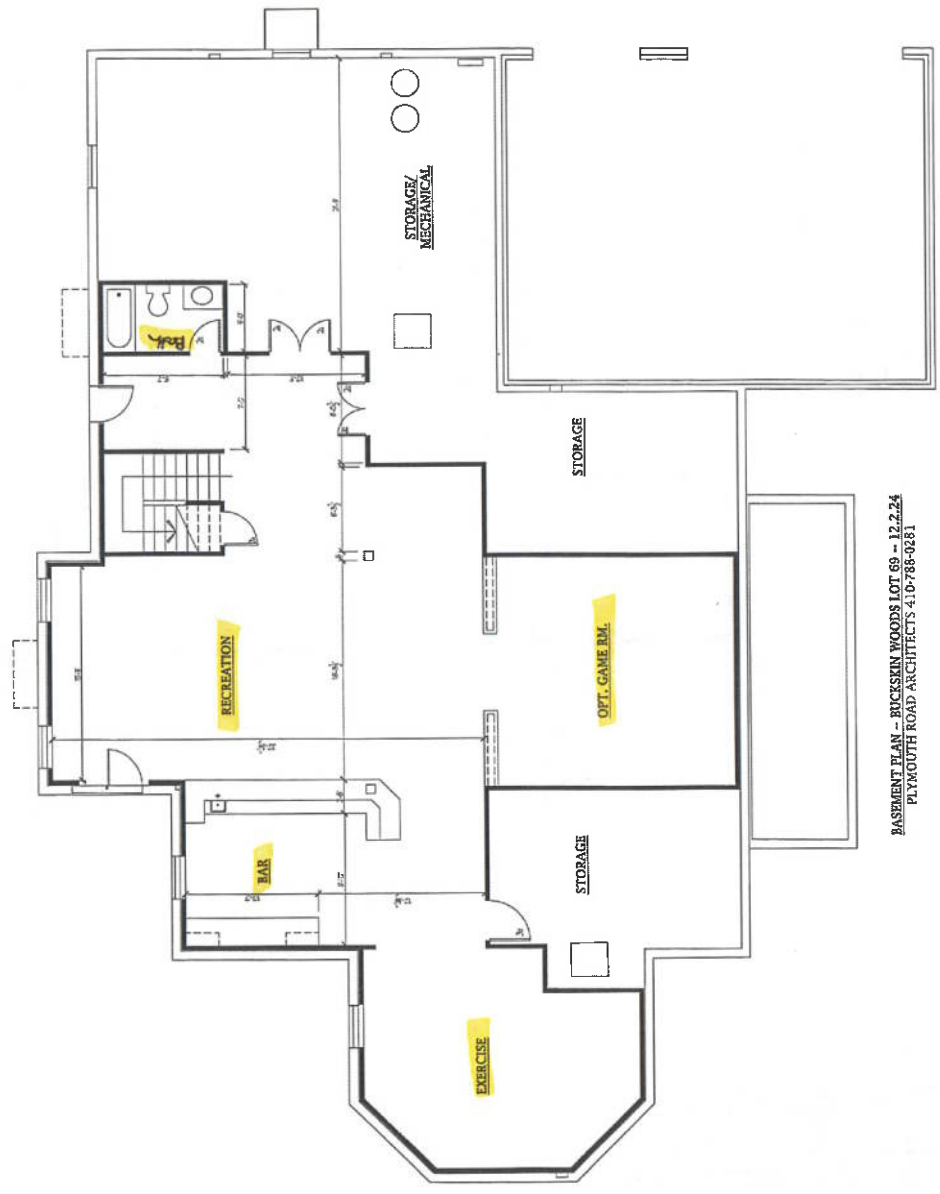
Project No. W24.12

Project: WILLIAMSBURG GROUP
WELLINGTON
BUCKSKIN WOODS LOT 69

Date: 12.24
Scale: 1/4"=1'-0"

DATE	REVISION

Plymouth Road Architects
640 Plymouth Road, Catonsville, MD 21229 410-788-0281



BASMENT PLAN - BUCKSKIN WOODS LOT 69 - 12.2.24
PLYMOUTH ROAD ARCHITECTS 410-788-0281